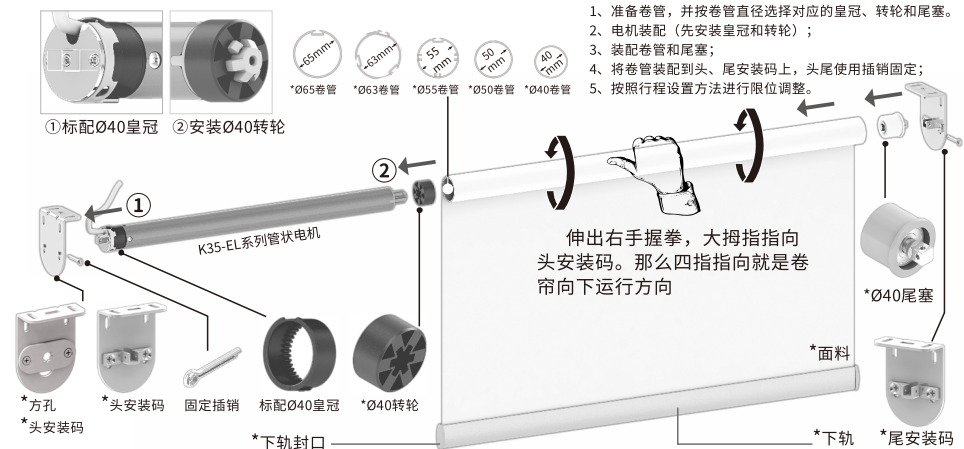


# K35-EL系列管状电机使用说明书

内嵌无线控制系统  
内嵌电子限位功能

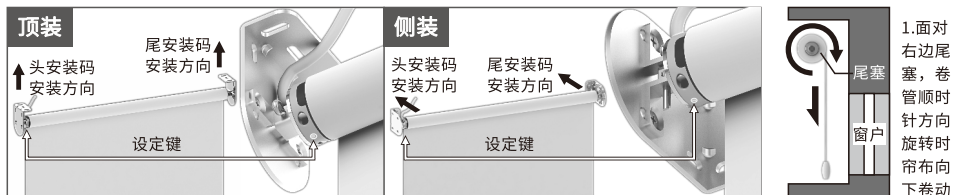
公司保留更改产品设计与说明书的权利，届时将不另行通知，图片仅供参考，具体以实物为准。H12035 A/5

## 电动卷帘机构图 注：带“\*”号的是非本电机标配部件（可订制零件）



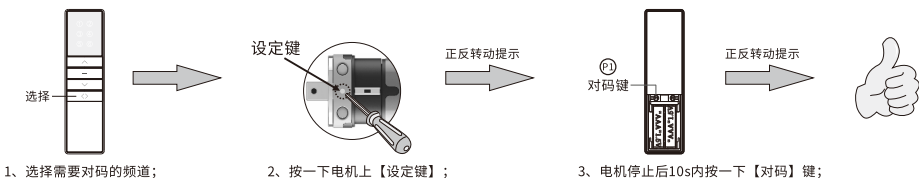
注：正确安装卷帘后面料应贴着窗户上下卷动

卷帘卷动方向示意图：

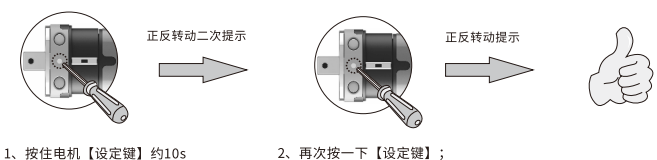


## 操作说明 (\*以A3按键发射器为例进行说明，其它发射器请参考相应的发射器说明书。)

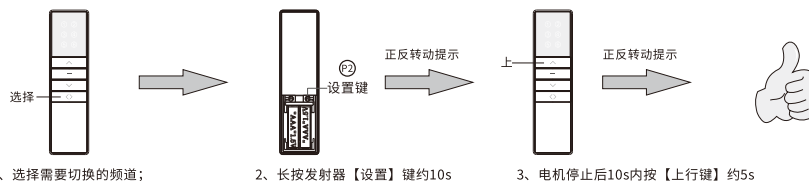
**对码：** 重复操作对码步骤即是消除当前码。一台电机最多储存10个发射通道，再增加新发射通道只会循环覆盖最后一个通道：



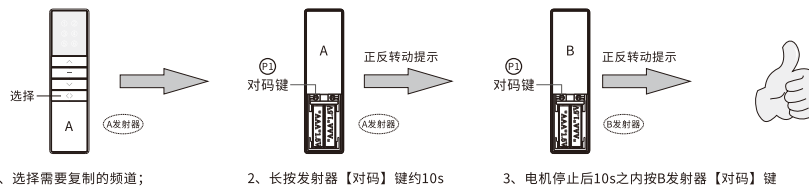
**消码：** 清除电机上所有接收储存发射器的记忆，其它设置不会改变或清除：



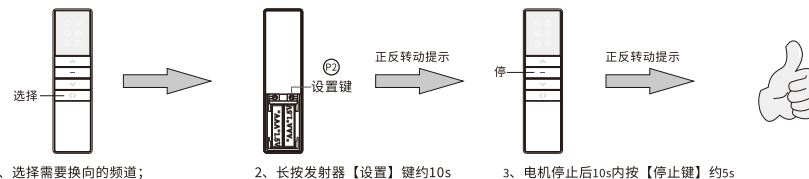
**点动/连动模式互换：** 电机出厂默认为连动模式，切换为点动模式后，长按住【上行键】或【下行键】约2s电机一直连动运转：



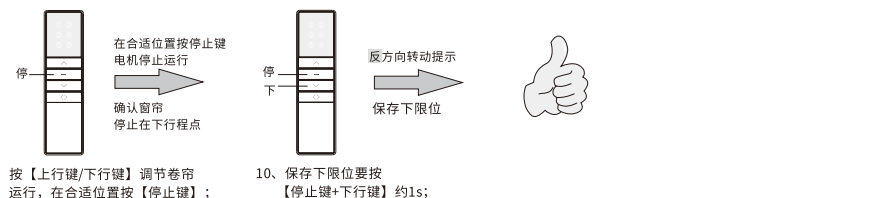
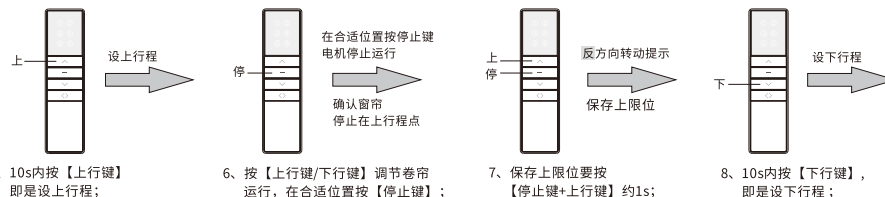
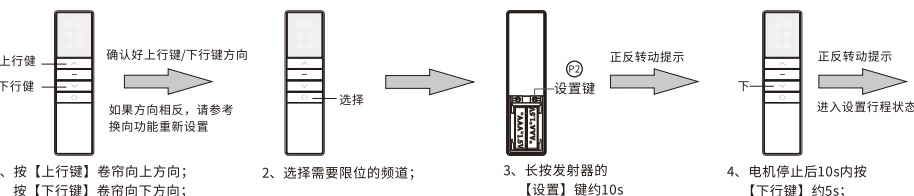
**复制：** 为已经对码的电机新增加一个发射器：



**换向：** 切换已对上码电机转向方向。如：换向前，按发射器上行键，窗帘往下运行；换向后，按发射器上行键，窗帘往上运行：



**上、下行程设置：** 指按发射器【上行键或下行键】时，卷帘向上/向下运行，所能到达的理想最高/最低位置。



# K35-EL Series Of Tubular Motor Operating Manual

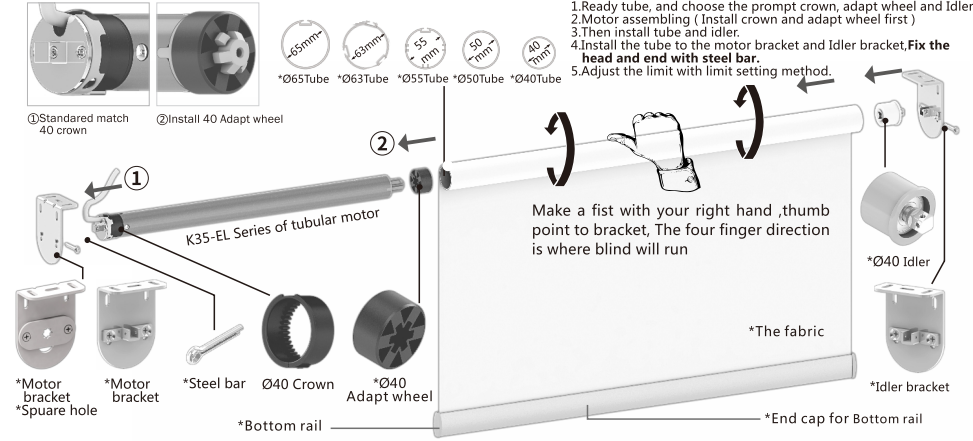


Inbuilt wireless control system  
Inbuilt electric limit switch function

Company reserves the right to change product design and specifications without prior notice then, photos are for reference only. H12035 A/5

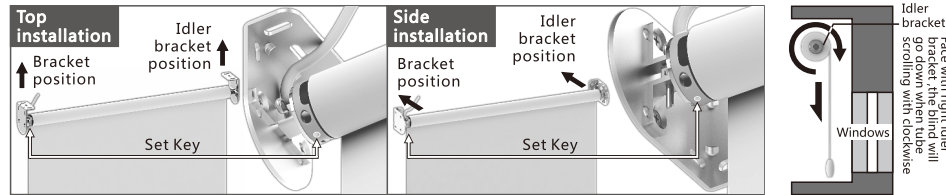
## E Electric roller blind draft

Note: the accessories which mark with "\*" are not standard assembly unit. (Available for custom made accessories.)



Note: Try to operate the whole roller blinds after installation, especially to check the fabric straight or not.

Roller blind scrolling direction diagram:

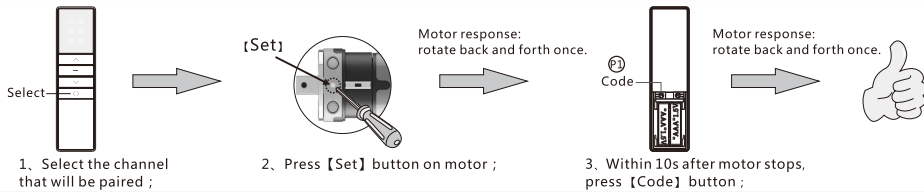


## I Instructions

(\*Take A3 button transmitter as an example, For other transmitters, please refer to the corresponding transmitter manual.)

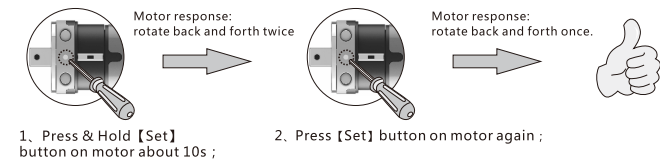
### Pairing transmitter and motor :

Repeat the pairing operation once to eliminate the current pairing. A motor stores up to 10 transmitter channels. Adding a new transmitter channel will cover the earliest channel. For example, current paired channels are 1-10. If you add channel 11, paired channels will be 2-11. :



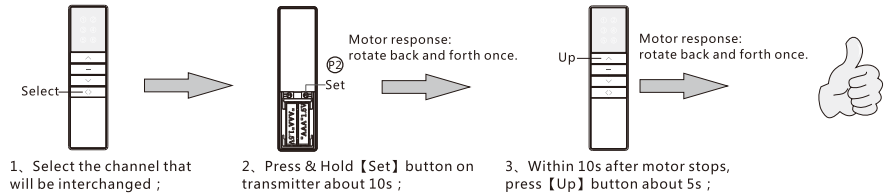
### Clear pairing :

Clear all pairing on the motor :



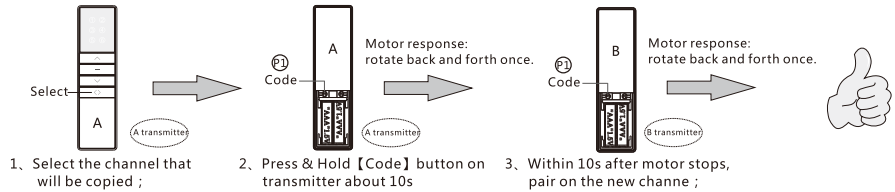
### Inching / Continuous moving interchange :

Default is continuous moving. After switching to inching moving, press & hold [Up] or [Down] button about 2s, motor will continuously moves :



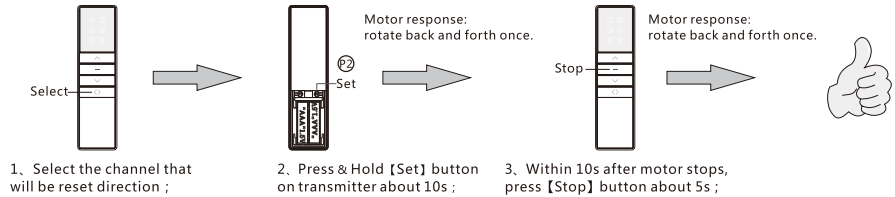
### Copy :

Add a new channel to control motor. (No need to touch motor) :



### Reset direction :

Reset motor direction. Such as: before reset, press transmitter up button, blinds run down. After reset, press transmitter up button, blinds run up.



### Adjusting Limits :

When you press [Up] or [Down] button, the blinds will move up or down and stop automatically at the appointed position.

