

# K45-TP系列管状电机使用说明书

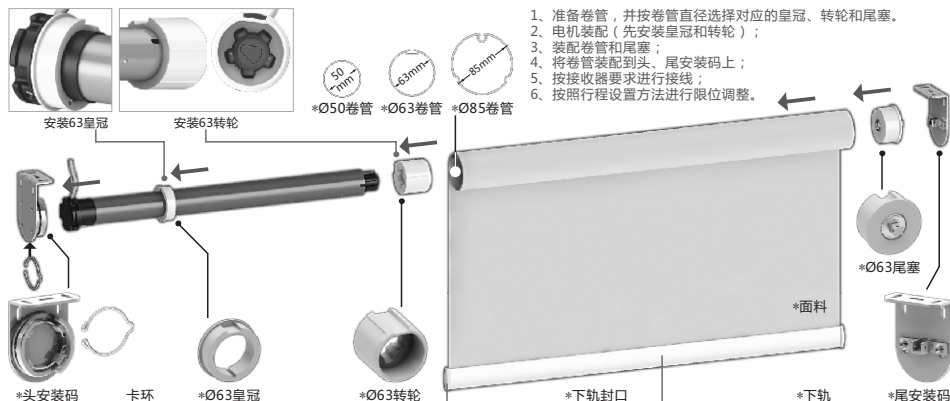
公司保留更改产品设计与说明书的权利，届时将不另行通知，图片仅供参考，具体以实物为准。H12014 A/3

## 电气原理图与接线方法

### 110V/220V接线图



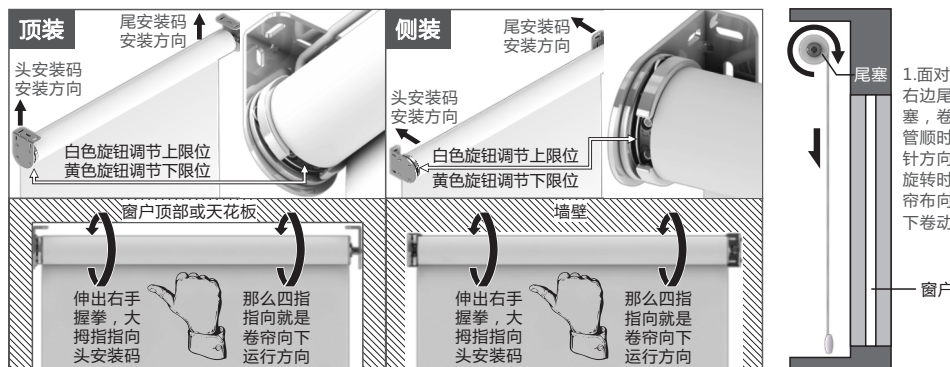
## 电动卷帘机构图 注：带“\*”号的是非本电机标配零件（可订制零件）



1. 准备卷管，并按卷管直径选择对应的皇冠、转轮和尾塞。
2. 电机装配（先安装皇冠和转轮）；
3. 装配卷管和尾塞；
4. 将卷管装配到头、尾安装码上；
5. 按接收器要求进行接线；
6. 按照行程设置方法进行限位调整。

注：正确安装卷帘后面料应贴着窗户上下卷动

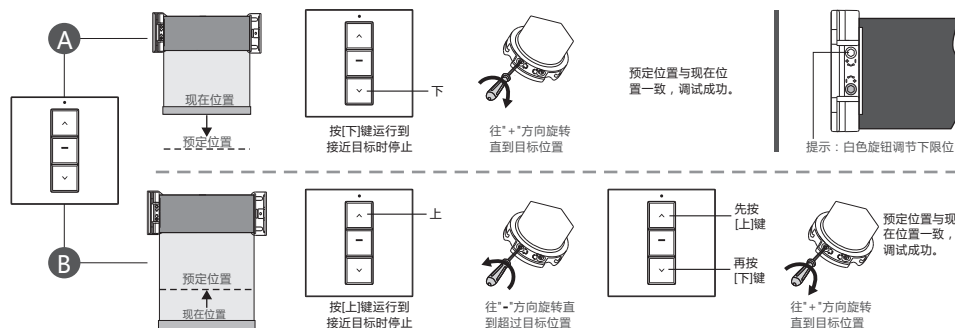
卷帘卷动方向示意图：



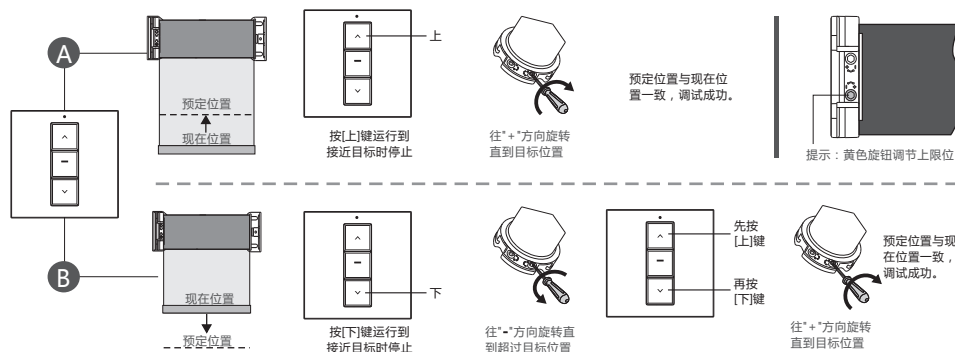
## 行程调节方法（注：先调节下限位后调节上限位）

温馨提示：若窗帘的运行方向与接收器的按键方向不一致时，请调换电机方向线或参照接收器说明书进行换向操作即可。

### 下限位行程调节方法（以A9单路AC100-240接收器为例）

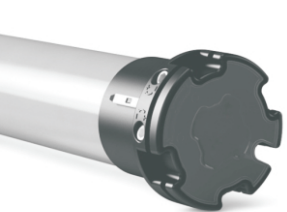


### 上限位行程调节方法（以A9单路AC100-240接收器为例）



## 常见故障及解决方法

序号	故障现象	故障原因	解决方法
1	电机安装通电后，电机不转或启动缓慢。	1. 电源与电机的额定电压不符； 2. 过载； 3. 安装不当而导致零配件卡死电机； 4. 电机内两个行程开关均未打开。	1. 更换与电源电压相匹配的电机； 2. 更换与负载相匹配的电机； 3. 检查各部分配件安装是否正确； 4. 将皇冠壳往任意方向转1-2圈即可。
2	通电后，电机只单向运转。	电机内该行程开关未打开	将皇冠壳往目前运转的反向旋转1-2圈即可
3	电机运行时突然停转	1. 电机已经进入过热保护状态； 2. 停电； 3. 进入设定的终点。	1. 等待约3-10分钟(视环境温度不同)电机冷却后，自动恢复正常工作状态； 2. 来电即可恢复； 3. 视情况决定是否要重新调节行程旋钮。
4	按接收器向下按钮，被卷物向上运行。	接收器控制方向与电机方向相反	将电机方向线位置对调或按接收器的换向设置。

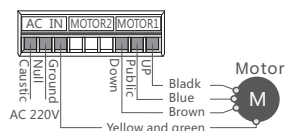


# K45-TP Series Tubular Motor Operating Manual

Company reserves the right to change product design and specifications without prior notice then, photos are for reference only. H12014 A/3

## Electrical diagrams and wiring method

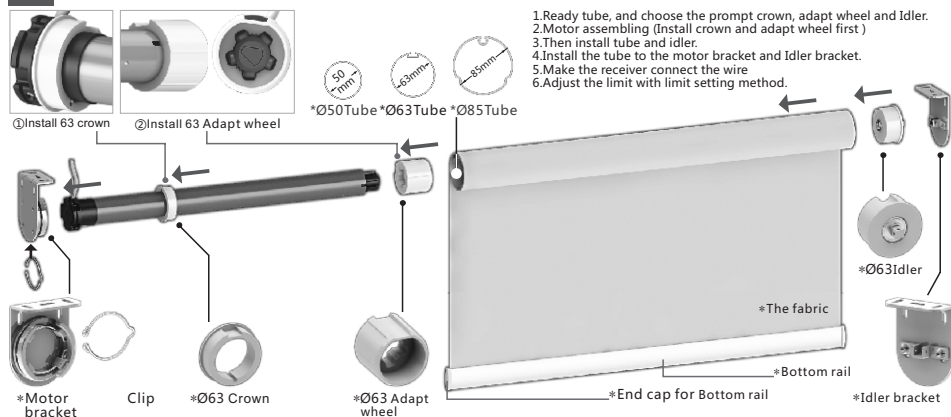
### 110V/220V wiring diagram



Black—Up(direction wire)  
Blue—Public line  
Brown—Down(direction wire)  
Yellow and green—Ground wire

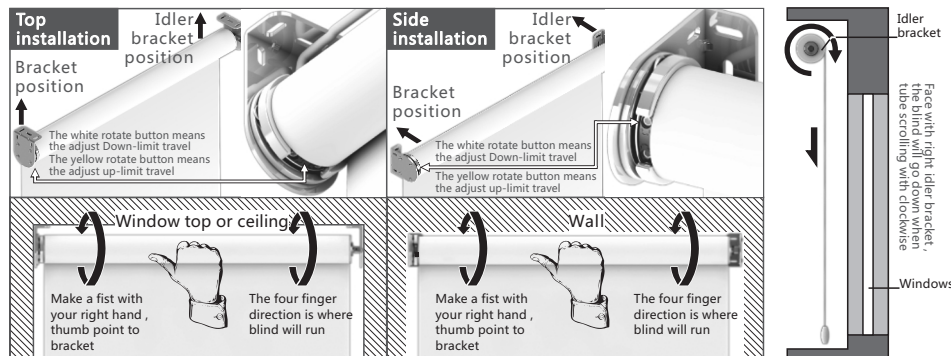
## Electric roller blind draft

Note: the accessories which mark with "\*" are not standard assembly unit. (Available for custom made accessories.)



Note: Try to operate the whole roller blinds after installation, especially to check the fabric straight or not.

Roller blind scrolling direction diagram:

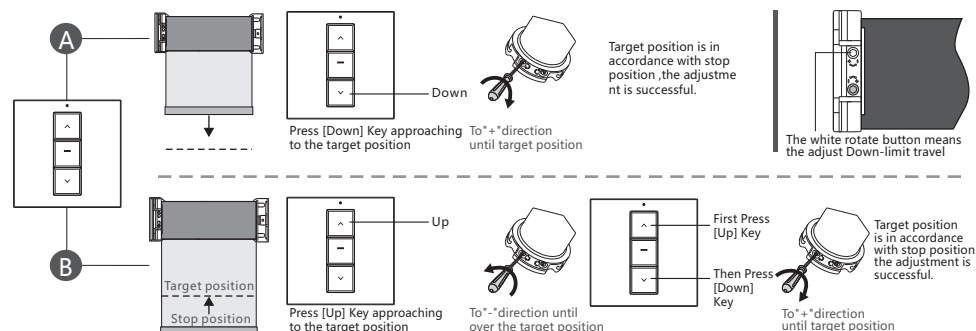


## Limit travel adjustment method

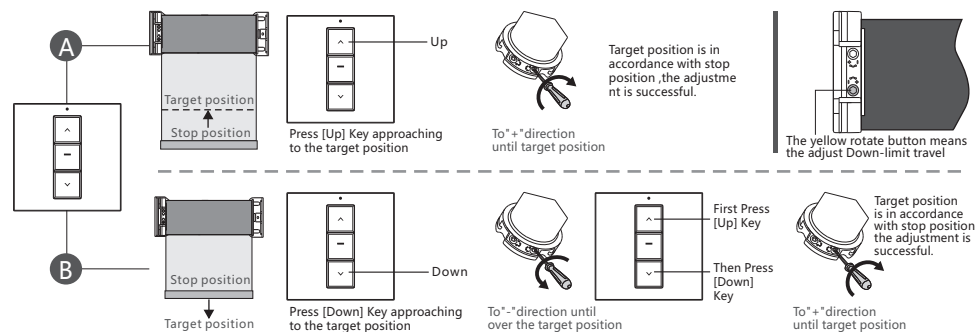
\*First adjust Down-limit travel and then up-limit travel. (Schematic diagram for the external receiver, if using the in-built receiver, it can be operated by transmitter button directly.)

Kindly remind: if the curtain movement direction is different with receiver key direction, Please change the motor direction wire or refer to the receiver manual for the reverse operation.

### Down-limit travel adjustment method (Such as A9 single channel AC 100-240V receiver.)



### Up-limit travel adjustment method (Such as A9 single channel AC 100-240V receiver.)



## Common faults and Solutions

No.	Appearance	Fault reason	Solution
1	The motor does not rotate or slow to start after be installed and electrified.	1. The power is not consistent with the rated voltage of the motor 2. Overload 3. Improper installation causes to the parts and accessories clamping the motor 4. The two trip switches are not opened in the motor.	1. Replacing the motor which matches power voltage 2. Replacing the motor which matches the load 3. Checking the part of accessories are properly installed; 4. Rotating the crown crust 1-2 circle in any direction.
2	The motor is only one-way operation after be electrified.	The trip switches are not opened in the motor.	Rotating the crown crust 1-2 circle in the present direction
3	The motor suddenly stops when it is running.	1. The motor has entered the state of the overheating protection; 2. Power failure 3. Turning into the end of setting.	1. Wait about 3-10 minutes ( depending on the different of ambient temperature ) .It automatically returns to normal working condition after the motor is cooling 2. To be recovered when has electricity. 3. Whether needing to adjust the rip button or not depends on the situation.
4	The fabric is in upward operation after pressing the down button of receiver.	The control direction of the receiver is opposite to the wiring of the motor	Exchange the direction wiring of the motor or press the receiver's reversing set.