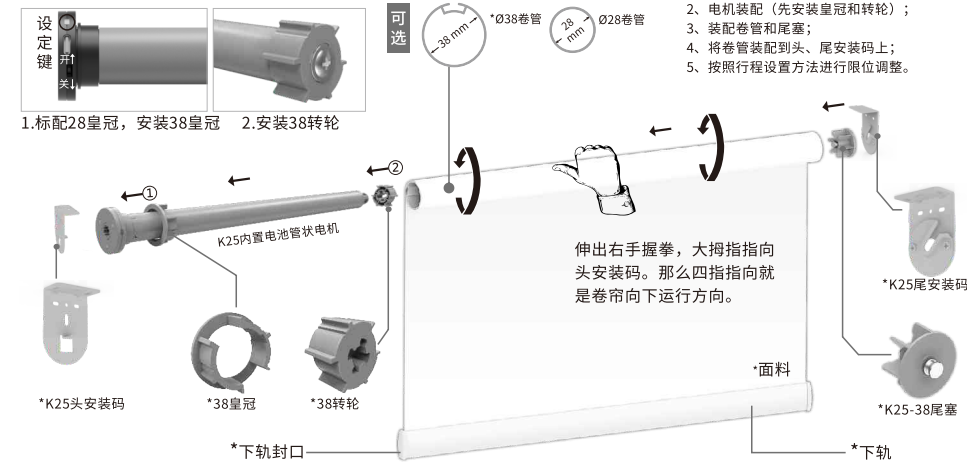


# K25-4E管状电机 II -NTY Zigbee说明书

公司保留更改产品设计与说明书的权利, 届时将不另行通知, 图片仅供参考, 具体以实物为准。 H12268 A/0

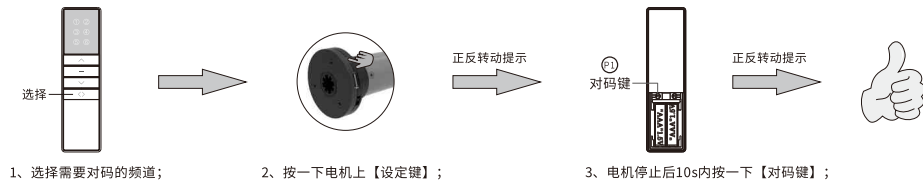
## 电动卷帘机构图 注: 带“\*”号的是非电机标配部件 (可订制零件)



注: 本产品不支持手拉功能; 另外请使用带有“q”图标或者L标签的专用发射器。如果产品长期不用, 需要充满电, 然后每隔12个月再次充满电以保持电池健康。

## 操作说明 (\*以A13按键发射器为例进行说明, 其它发射器请参考相应的发射器说明书。)

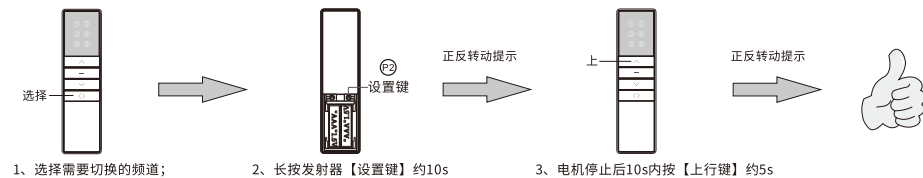
**对码:** 重复操作对码步骤即是消除当前码。一台电机最多存5个遥控器, 再增加遥控器只会覆盖第一个:



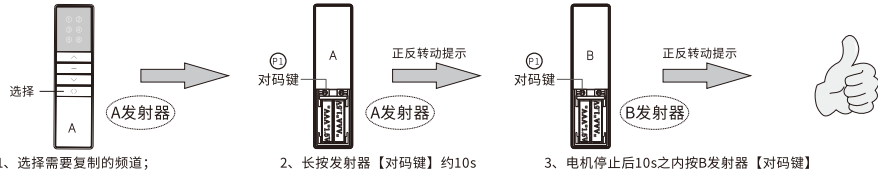
**消码:** 清除电机上所有接收储存发射器的记忆, 其它设置不会改变或清除:



**点动/连动模式互换:** 电机出厂默认为连动模式, 切换为点动模式后, 长按住【上行键】或【下行键】约2s电机会一直连动运转:



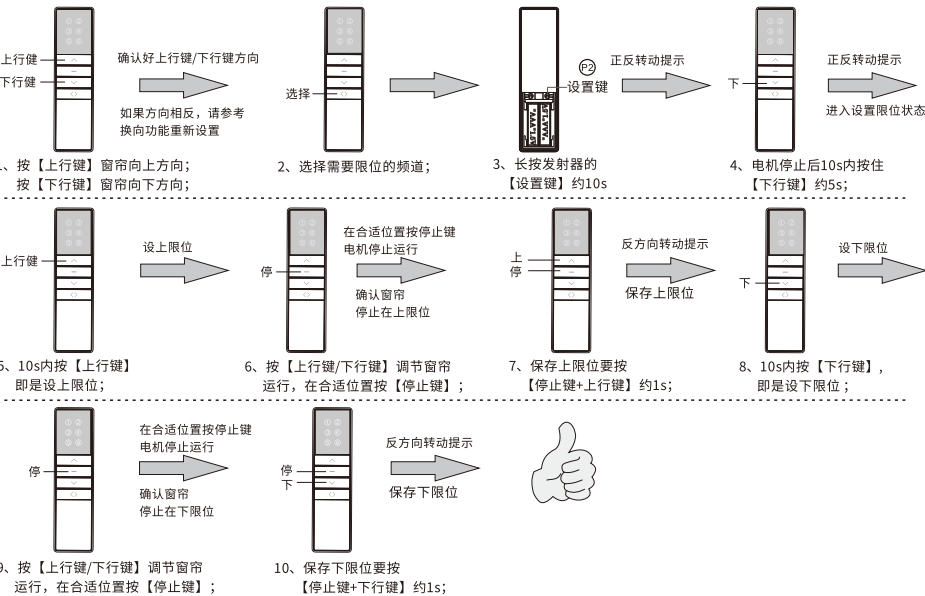
**复制:** 为已经对码的电机新增一个B发射器:



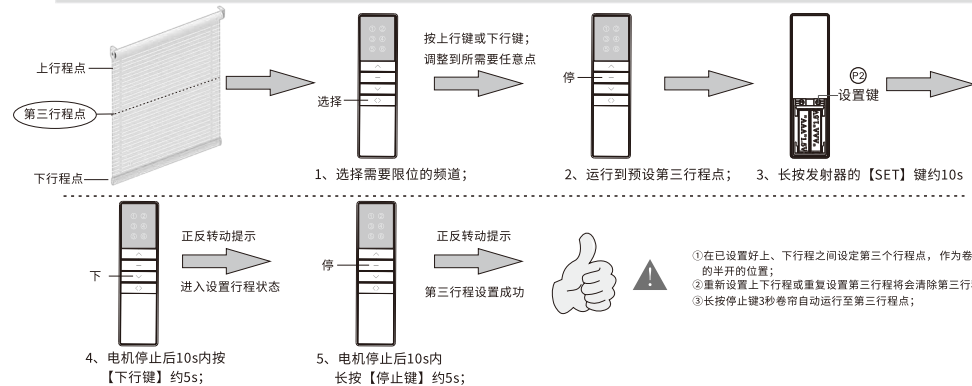
**换向:** 切换已对上码电机运转方向。如: 换向前, 按发射器上行键, 窗帘往下运行; 换向后, 按发射器上行键, 窗帘往上运行:



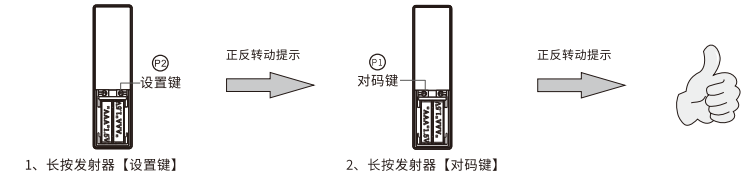
**上限位/下限位设置:** 指按发射器【上行键或下行键】时, 窗帘向上/向下运行, 所能到达的理想最高/最低位置。



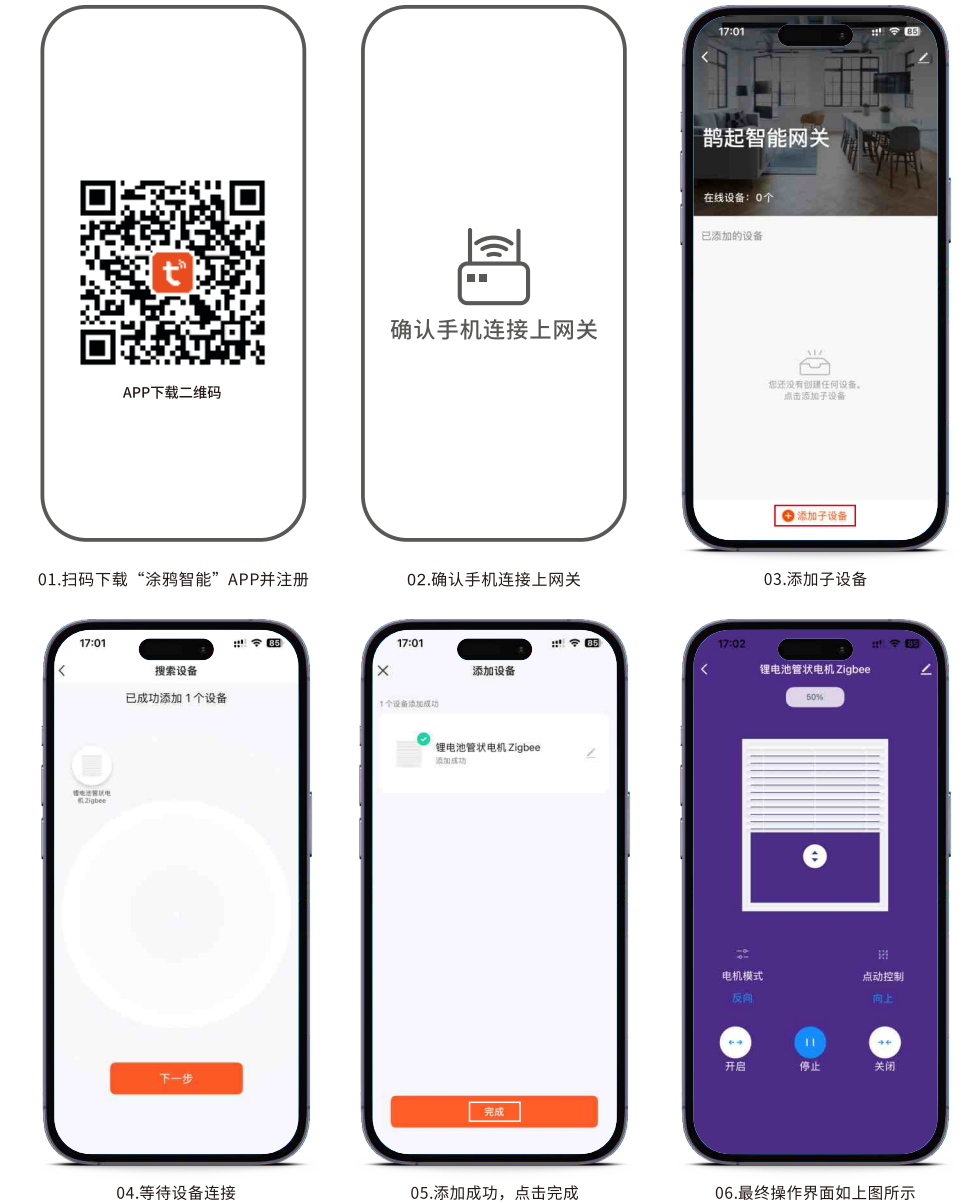
**第三行程设置:** 重复操作设置将会取消第三行程点:



**配网重置方法:**



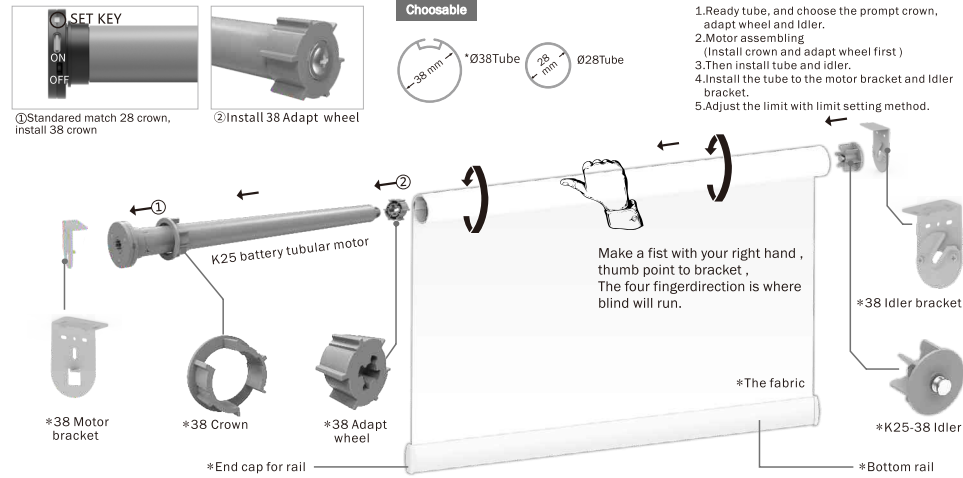
**APP配网方法:** 操作前确保手机蓝牙与网络数据已打开



# K25-4E Tubular Motor NTY Zigbee Operating Manual

Company reserves the right to change product design and specifications without prior notice then, photos are for reference only. H12268 A/0

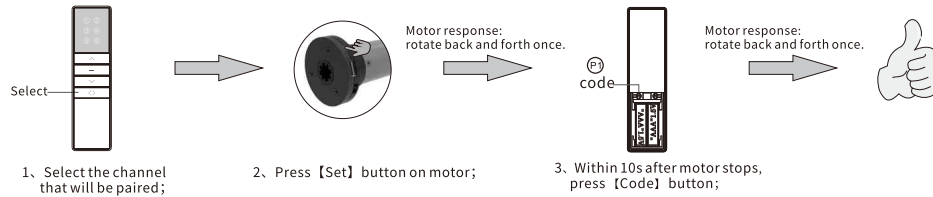
## E Electric roller blind draft (If the accessory with "\*" that mean could be OEM)



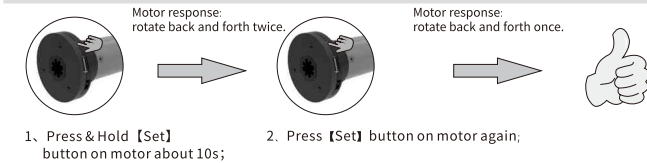
Note: This product does not support hand-pull function; Also use a dedicated transmitter with a "P" icon or an L-tag. Fully charge the product when not in use, and then recharge it every 12 months.

## T Transmitter operating instructions (\*Take A13 button transmitter as an example, For other transmitters, please refer to the corresponding transmitter manual.)

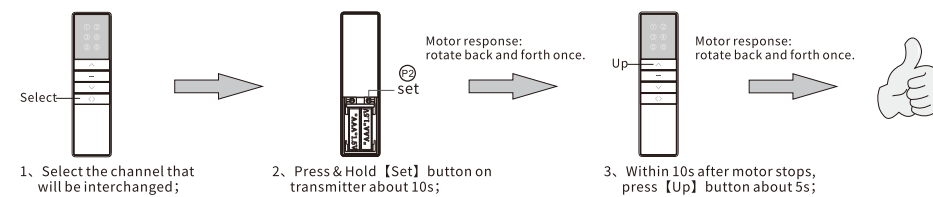
**Pairing transmitter and motor:** Repeat the code pairing step to eliminate the current code. One motor can store up to 5 channels, adding a new channel will only cover the first channel.



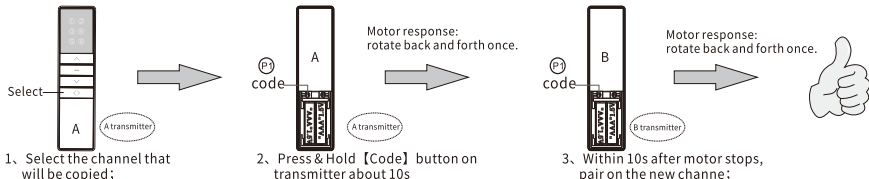
**Clear pairing:** Clear all pairing on the motor:



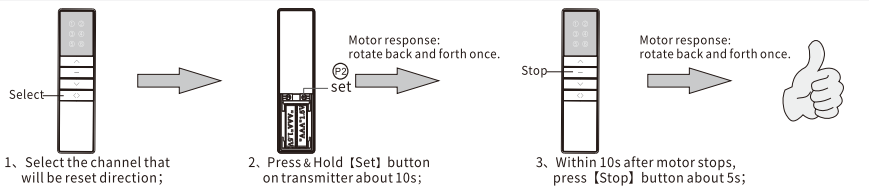
**Inching / Continuous moving interchange:** Default is continuous moving. After switching to inching moving, press & hold [Up] or [Down] button about 2s, motor will continuously moves:



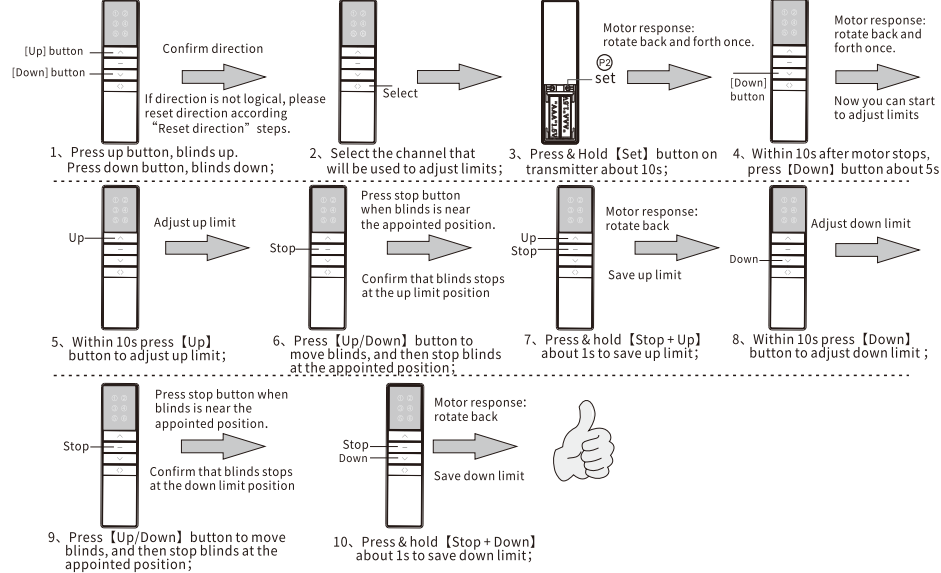
**Copy:** Add a new channel to control motor. (No need to touch motor):



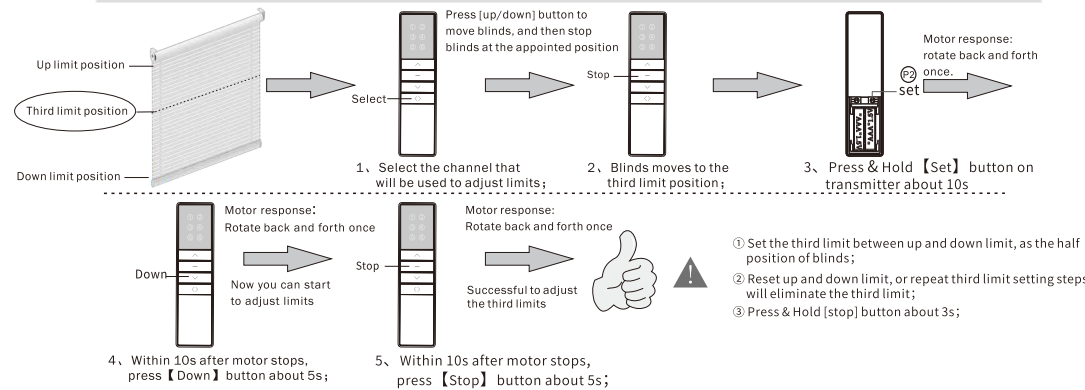
**Reset direction:** Reset motor direction. Such as: before reset, press transmitter up button, blinds run up. After reset, press transmitter up button, blinds run up.



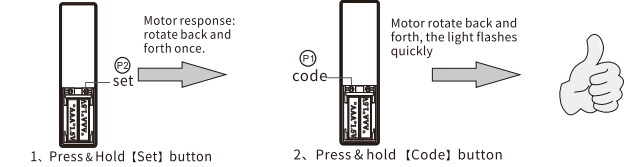
**Adjusting Limits:** When you press [Up] or [Down] button, the blinds will move up or down and stop automatically at the appointed position.



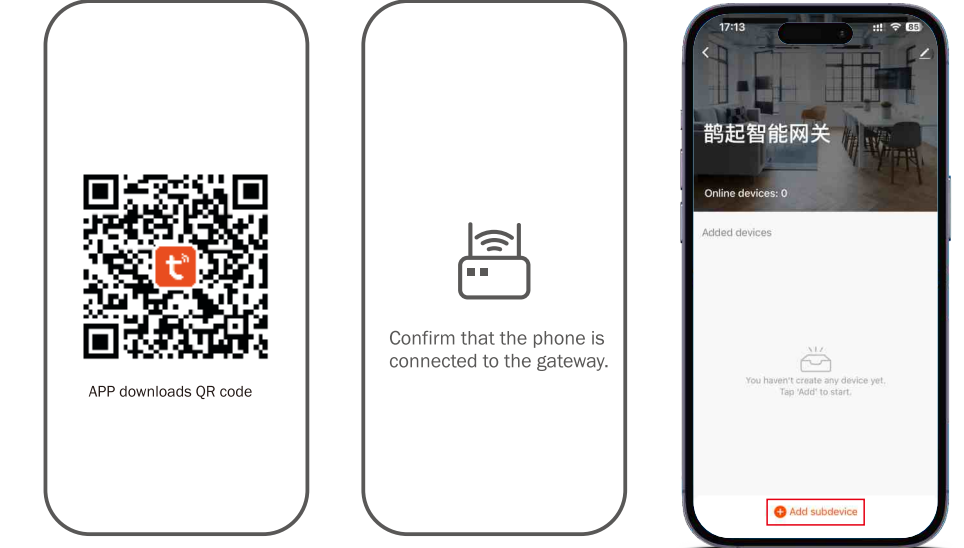
**Adjust the third limit:** Repeat the operation once to eliminate the third limit:



**Reset Wi-Fi:**



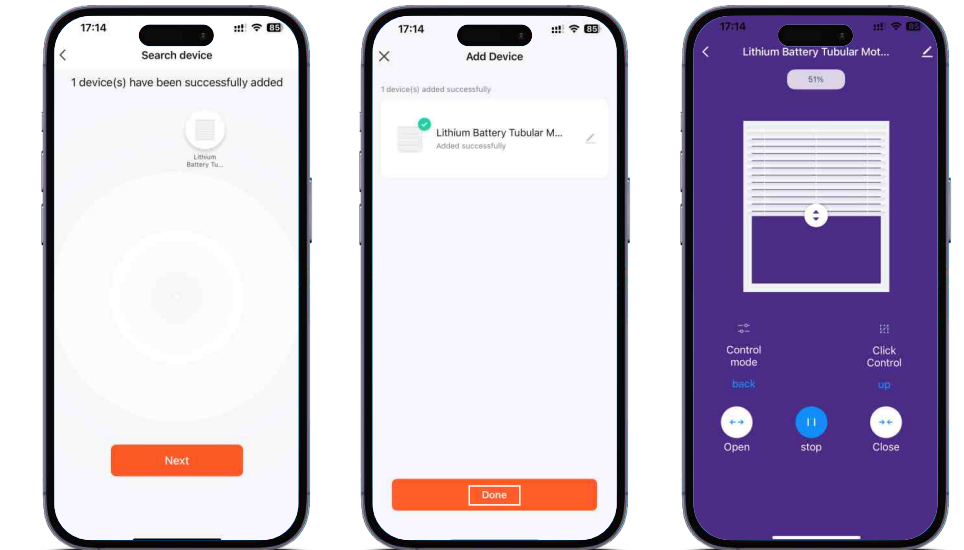
**Configure network method:** Before operation, make sure the Bluetooth and network of the mobile phone are turned on.



01. Scan the code to download the "Graffiti Intelligence" APP and register.

02. Confirm that the phone is connected to the gateway.

03. Add subdevice



04. Waiting for connecting.

05. After added successfully, click "done"

06. Operation interface