

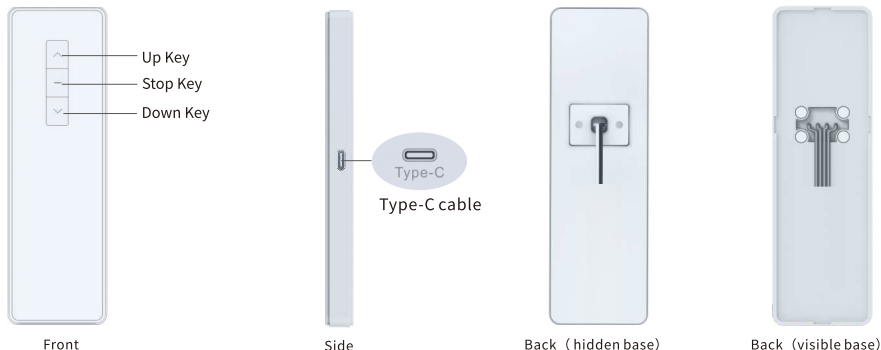
A16 Lithium Battery receiver transmitter specification

Company reserves the right to change product design and specifications without prior notice then ,photos are for reference only.

A/1 H12208

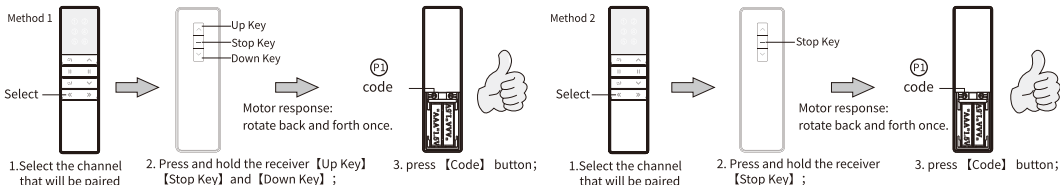
Features

1. Input voltage: DC5V
2. Battery specifications: 2600mAh 3.7V
3. The red indicator is always on when charging, and the full-charge indicator goes out

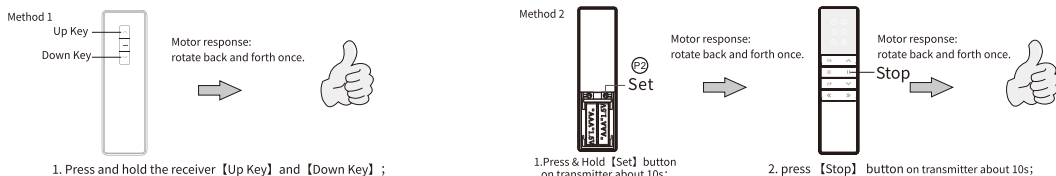


Pairing transmitter and motor:

Repeat the pairing operation once to eliminate the current pairing. A motor stores up to 5 transmitter channels, Adding a new transmitter channel will cover the earliest channel. For example, current paired channels are 1~5. If you add channel 6, paired channels will be 2~6. :

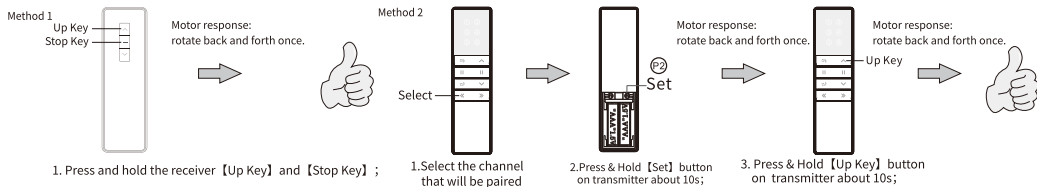


Reset direction: Reset motor direction. Such as: before reset, press transmitter up button, blinds run down. After reset, press transmitter up button, blinds run up.



Inching / Continuous moving interchange:

Default is continuous moving. After switching to inching moving, press & hold [Up] or [Down] button about 2s, motor will continuously moves:



Copy: Add a new channel to control motor. (No need to touch motor):

Clear pairing: Clear all pairing on the motor:

