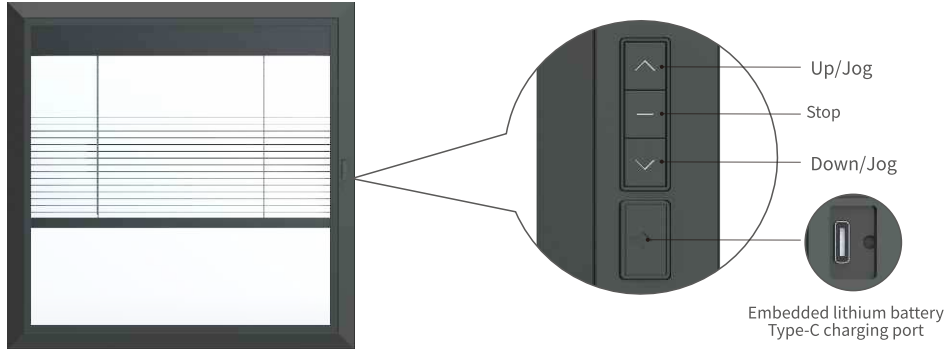


E19 Embedded Venetian Blind Motor Instructions

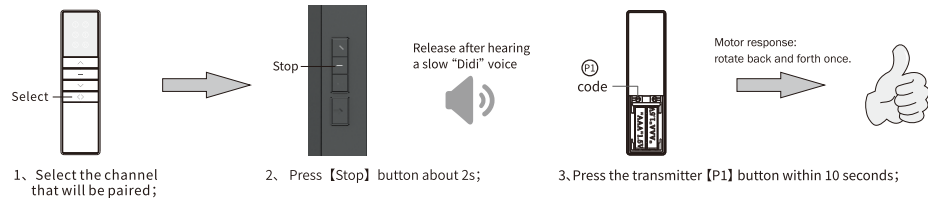
Company reserves the right to change product design and specifications without prior notice then .photos are for reference only. A/0 H12163

Product profile

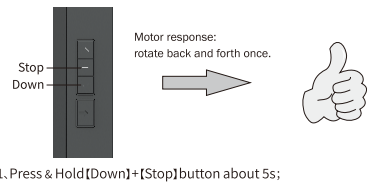


Instructions: (Take A13 button transmitter as an example, for other transmitters, please refer to the corresponding transmitter manual.)

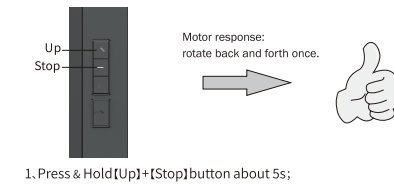
Pairing transmitter and motor: Repeating the pairing steps to delete current pairing.A motor can store up to 5 channels, add new channel, the earliest channel will be deleted:



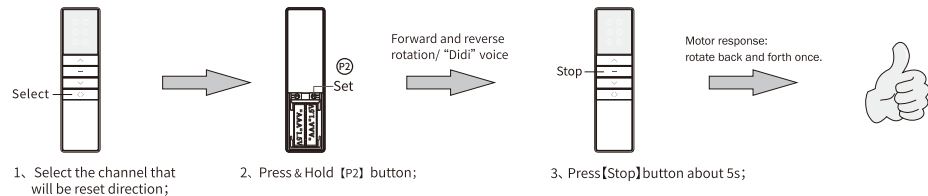
Clear pairing : Repeat to switch between the two modes



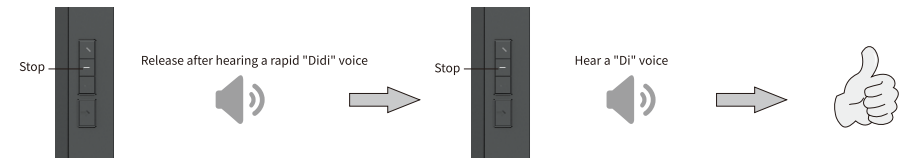
Jog-to-continuously moving switching: Repeat to switch between the two modes



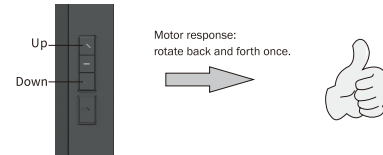
Change direction with remote control: repeat to switch directions.



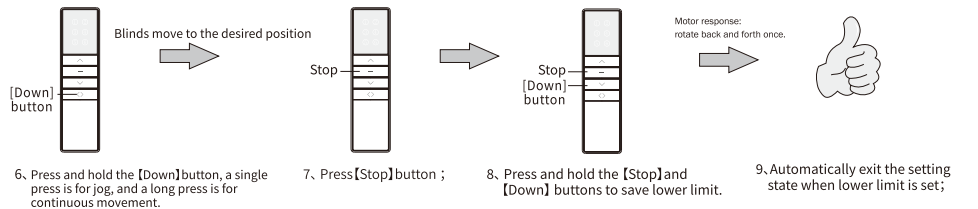
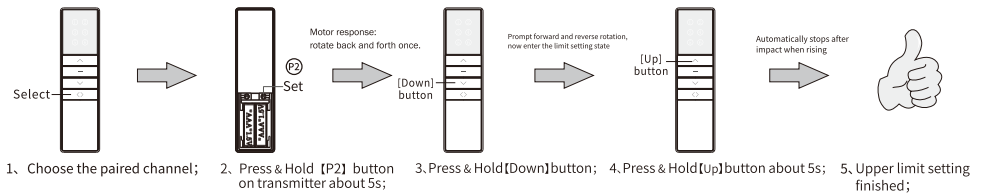
Self-locking function: Locks up/down buttons and remote control operations. Repeating the operation to unlock.



Change direction with control panel : repeat to switch directions.



Remote control sets limits: Upper limit has to be the first, then the lower limit. Repeating the operations will set a new upper and lower limit.



Control panel sets limits: Upper limit has to be the first, then the lower limit. Repeating the operations will set a new upper and lower limit.

