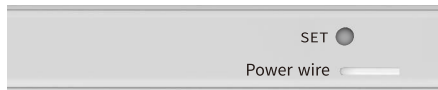


Company reserves the right to change product design and specifications without prior notice then, photos are for reference only. H12254 A/0

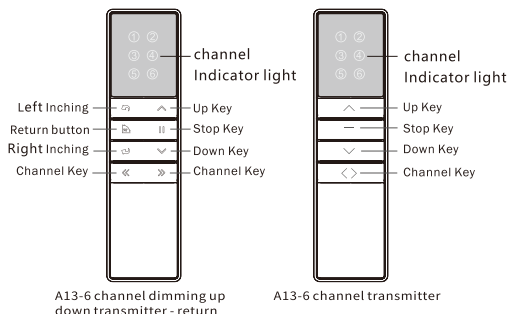
P Product introduction



Front



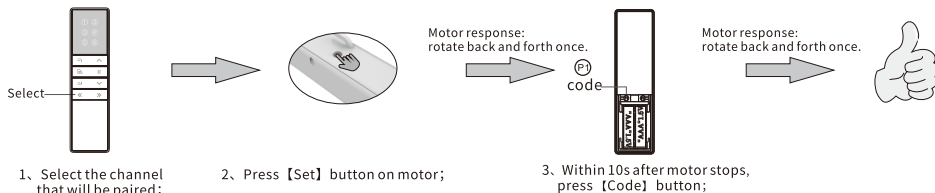
Side



Transmitter operating instructions

(*Take A13-6 button transmitter as an example,For other transmitters,please refer to the corresponding transmitter manual.)

Pairing transmitter and motor: Repeat the code pairing step to eliminate the current code. One motor can store up to 5 channels, adding a new channel will only cover the first channel.

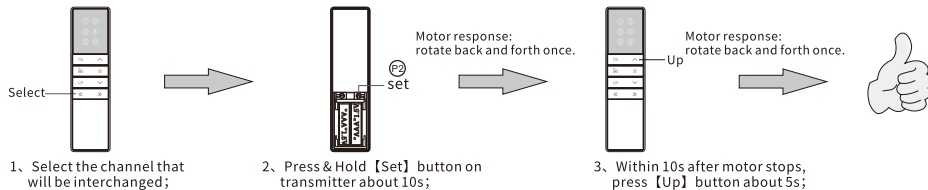


Clear pairing : Clear all pairing on the motor:

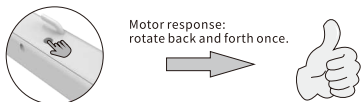


- 1、Press & Hold **【Set】** button on motor about 10s;
- 2、Press **【Set】** button on motor again;

Inching / Continuous moving interchange: Default is continuous moving. After switching to inching moving, press & hold **[Up]** or **[Down]** button about 2s, motor will continuously moves:

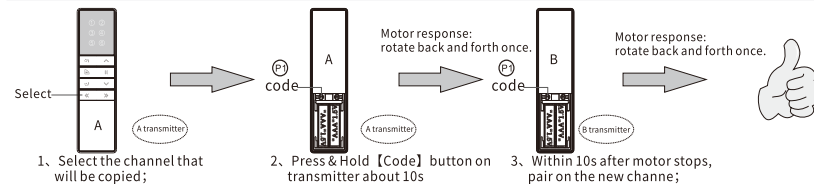


Speed setting: two-speed can be adjusted, the first speed is 23r/min, the second speed is 28r/min, the first speed is defaulted before leaving the factory

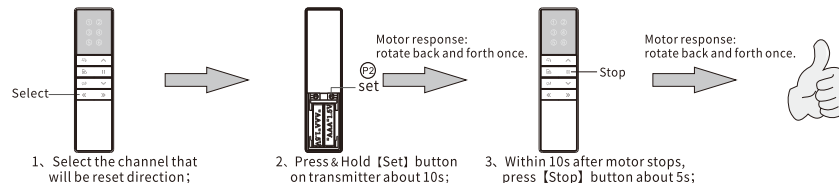


1、Press & Hold **【Set】** button on motor about 15s;

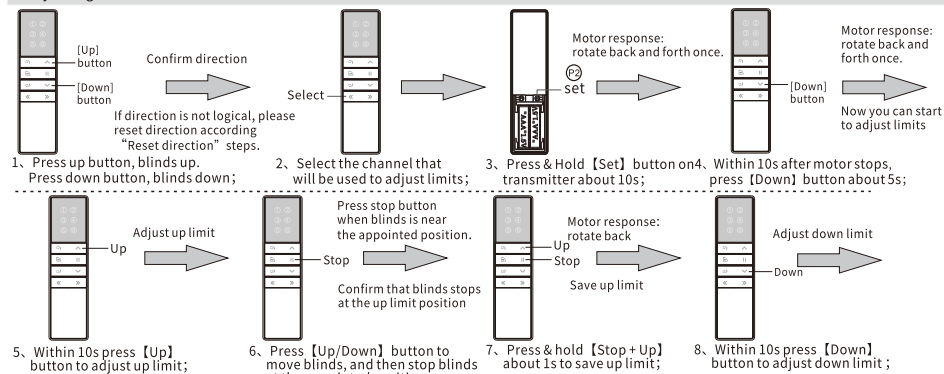
Copy: Add a new channel to control motor. (No need to touch motor):



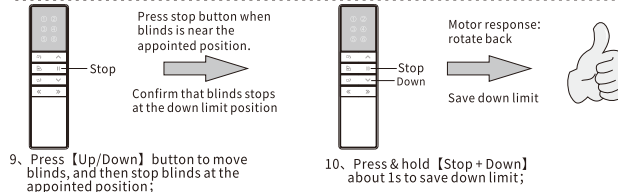
Reset direction : Reset motor direction. Such as: before reset, press transmitter up button, blinds run down. After reset, press transmitter up button, blinds run up.



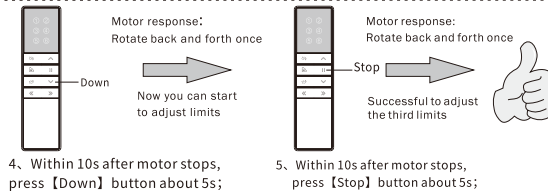
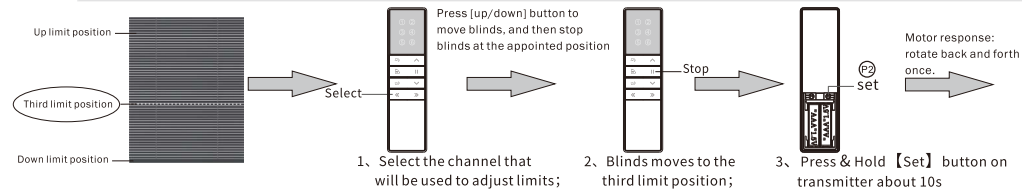
Adjusting Limits: When you press **[Up]** or **[Down]** button, the blinds will move up or down and stop automatically at the appointed position.



at the appointed position;



Adjust the third limit: Repeat the operation once to eliminate the third limit:



- ① Set the third limit between up and down limit, as the half position of blinds;
- ② Reset up and down limit, or repeat third limit setting steps will eliminate the third limit;
- ③ Press & Hold [stop] button about 3s;