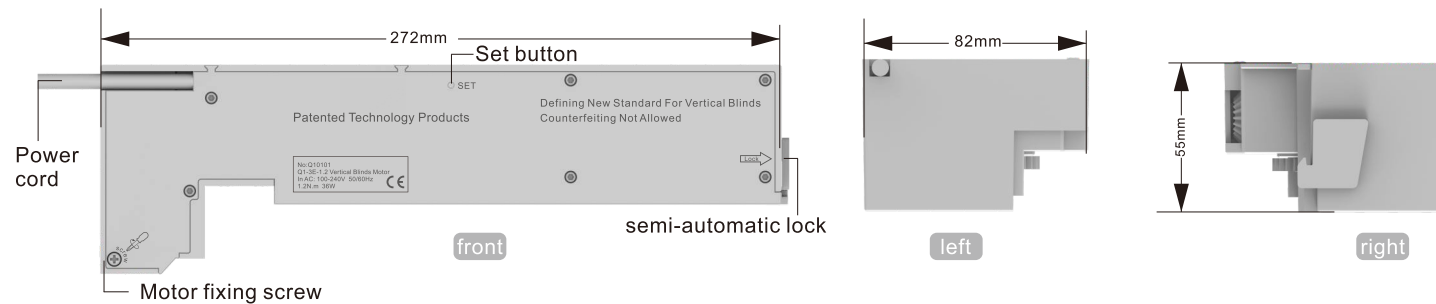


Vertical Blinds Motor Manual

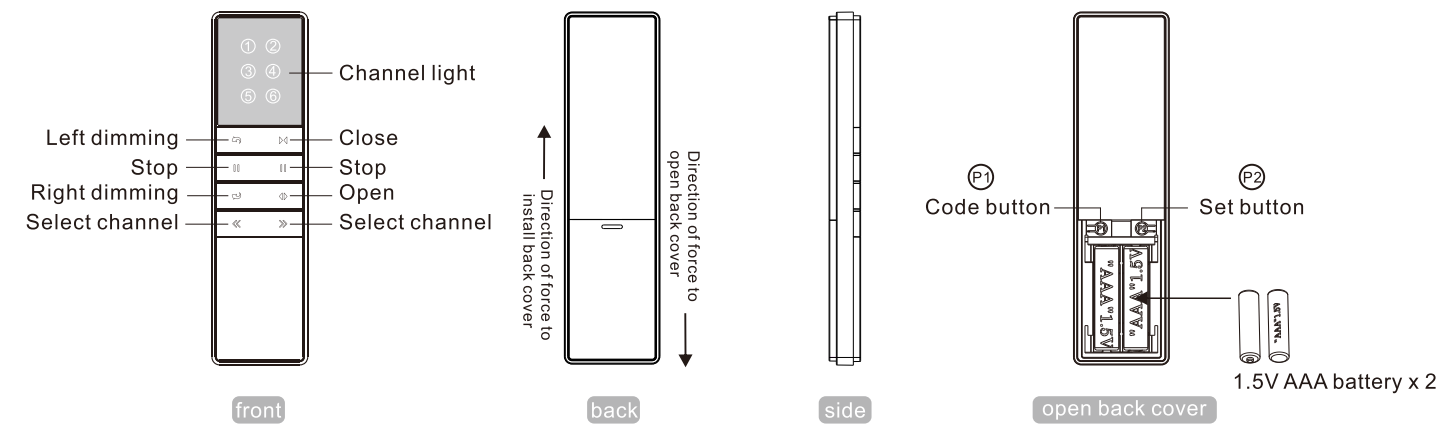
reserves the right to change the product design and manual without prior notice. The pictures are for reference only.

A/1 H12155

Motor Introduction Take the Q1-3E-1.2 Vertical Blinds motor as an example to illustrate

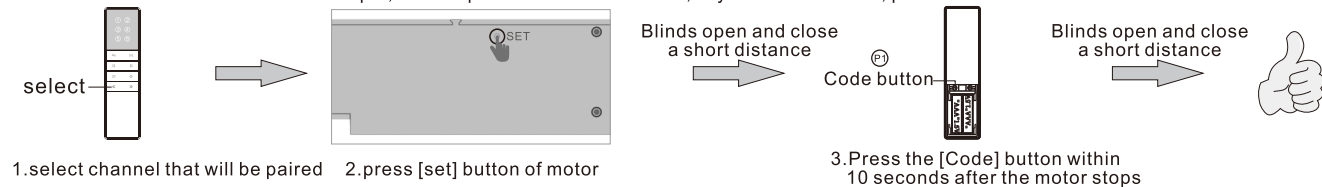


Transmitter Introduction

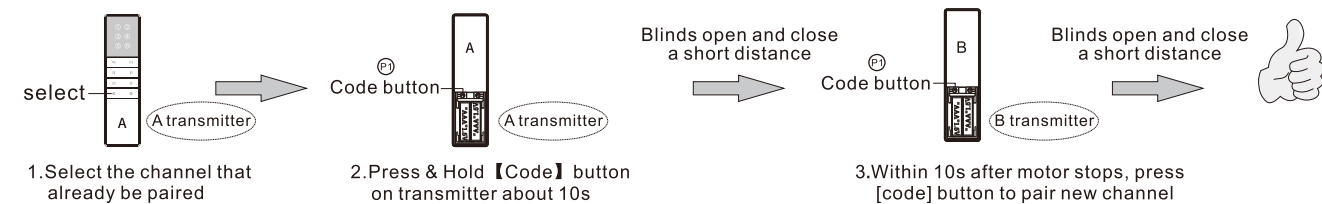


Instructions Take A13 button transmitter as an example for illustration, please refer to the corresponding manual for other transmitters

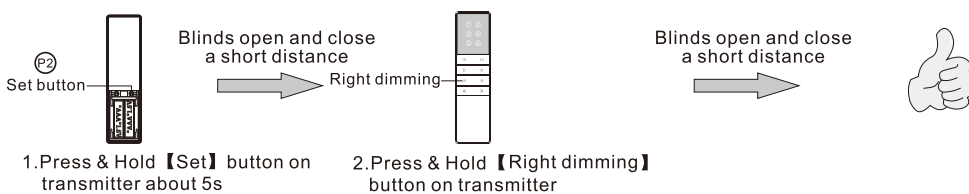
Code pairing Repeat the code pairing step to eliminate the current code. One motor can store up to 5 channels, adding a new channel will only cover the first channel. For example, current paired channels are 1~5, if you add channel 6, paired channels will be 2~6.



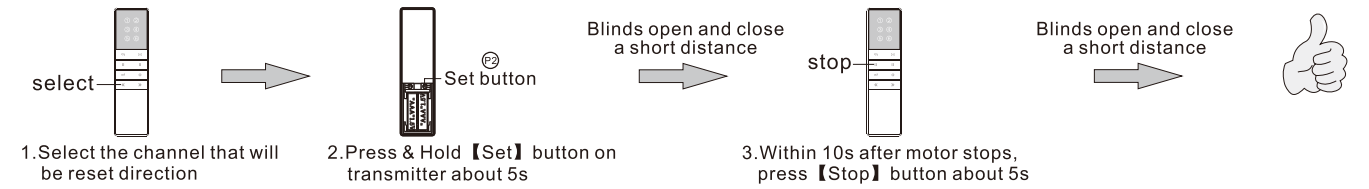
Copy Add a new channel to control motor. (No need to touch motor):



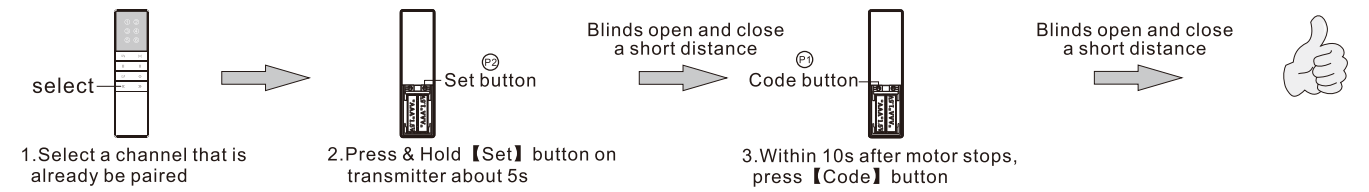
Set the center closed move



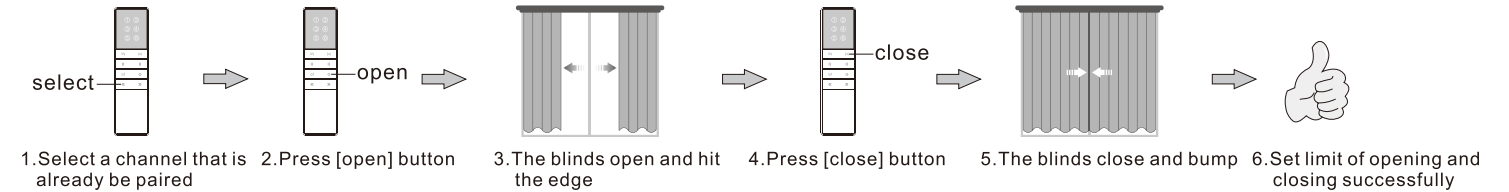
Change direction of opening and closing If press remote [open] button, but blinds closes. Set it. This setting will not change dimming direction.



Delete the limit of opening and closing This setting will not change limit of dimming, but it will change max dimming 170 degree to 130 degree. The max dimming degree will be 170 after opening and closing limit setting is finished.

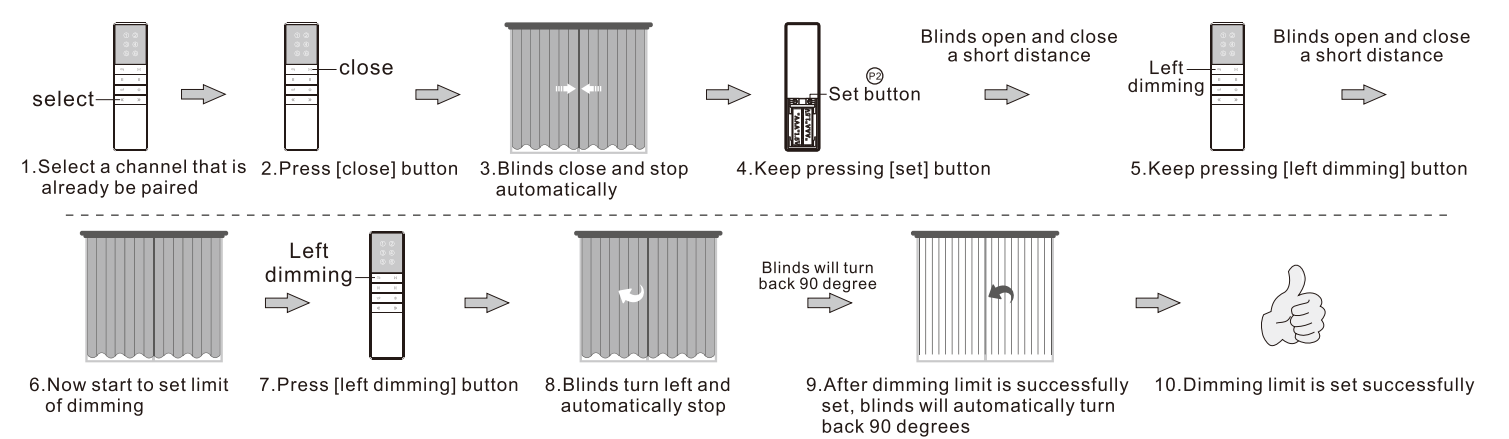


Set limit of opening and closing If limit of opening and closing is not suitable for current track, please do above steps to delete limit firstly, then set new limit as below steps. (limit of opening and closing is required to set limit of dimming.)



Note: If blinds degree is not 90 (means not perpendicular to the track) when you set limit of opening and closing, please press transmitter dimming button to adjust to 90 degree. If not, the misaligned left and right blinds maybe destroy the runners when closing

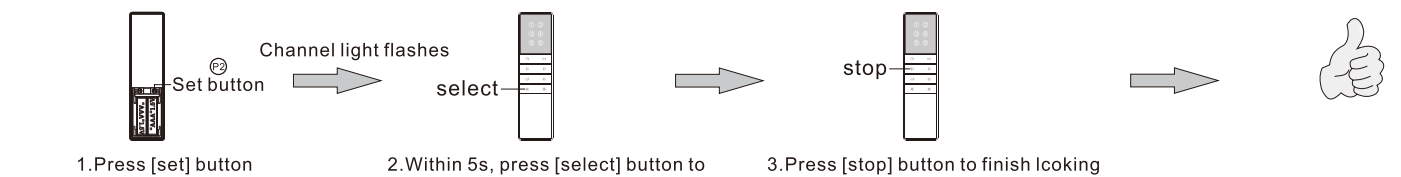
Set limit of dimming Note: When setting the dimming limit, the binds must run to the fully closed position, otherwise the dimming limit cannot be set



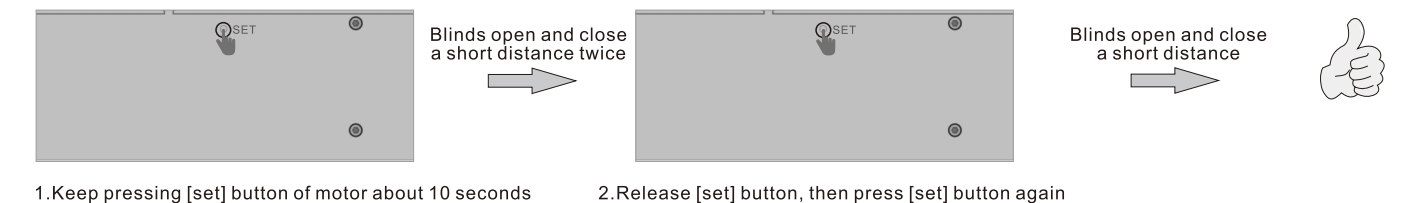
Note:

- When press [open] or [close] button, the blinds will turn to 90 degrees (perpendicular to the track) automatically, then start to open or close. If it is not 90 degrees when opening or closing, please re-set limit of dimming
- When blinds is on fully closed position, max dimming degree is 170. If on other position, max dimming degree is 130
- Motor does not have any limit at factory, so the blinds will not do this action: turn automatically and then open or close

Lock transmitter channel For example, the transmitter has 6 channels. There are only two blinds. In this case you can lock transmitter channels from 6 to 2

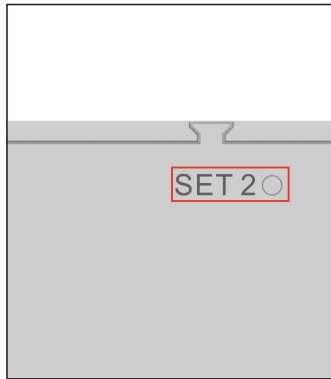


Factory reset clear all settings on the motor

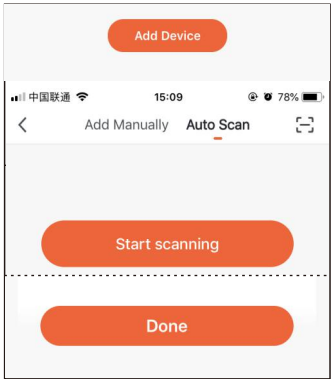


Manual Of NTY Wifi Vertical Blinds Motor

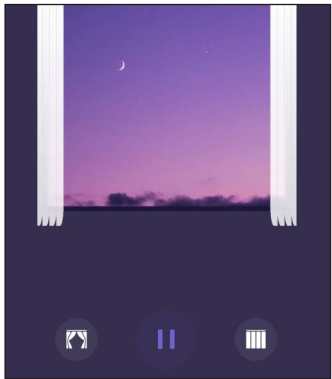
WiFi configuration method one (direct connection)



1.Power on, press and hold the [SET2] buttonfor 5 seconds, the indicator light flashescontinuously and releases, and now canstart network configuration. Reminder: If the indicator light is flashing fast, please skip this step.

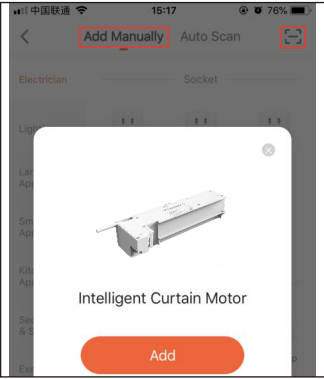


2.Click "Add Device", select Auto Scan, the indicator light will go out after successful connection.

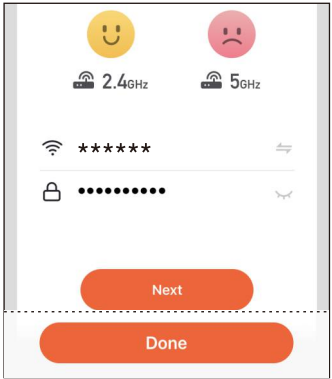


3.The final operation interface is shown in the figure above.

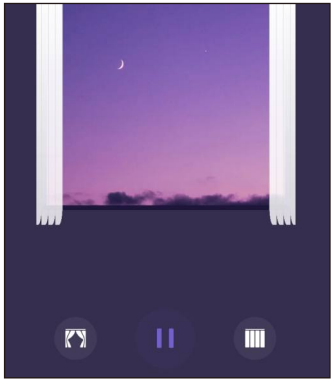
WiFi configuration method two (scan the QR code)



1.Open the APP,select "Add Device";select the "Scan" icon in the upper right corner,scan the QR code,and select Add after the "Intelligent Curtain Motor" appears.

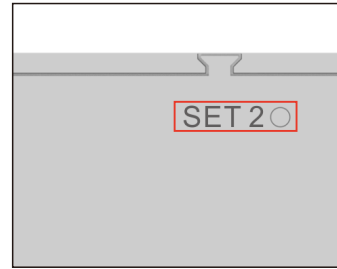


2.Confirm that the WiFi information is correct and the indicator light flashes quickly, click "Next," appears "Added", click "Done".



3.The final operation interface is shown in the figure above.

Clean network



Long press the[SET2] button for 5 seconds, the indicator light flashes continuously and releases. Network cleaned.

QR Code for Configure Network



Configure Network QR Code