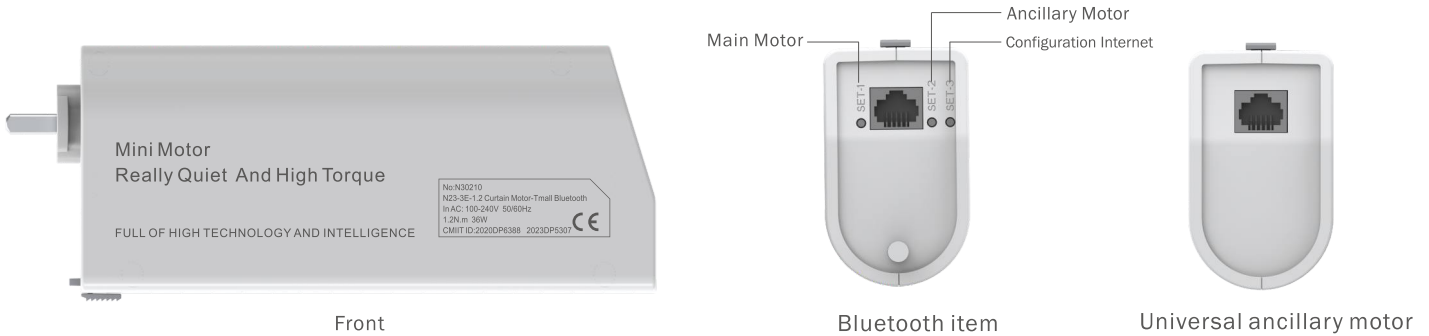


Curtain Motor Manual

Company reserves the right to change product design and specifications without prior notice then ,photos are for reference only. A/0 H12157

Product Introduction



Bearing Capacity Parameter Table

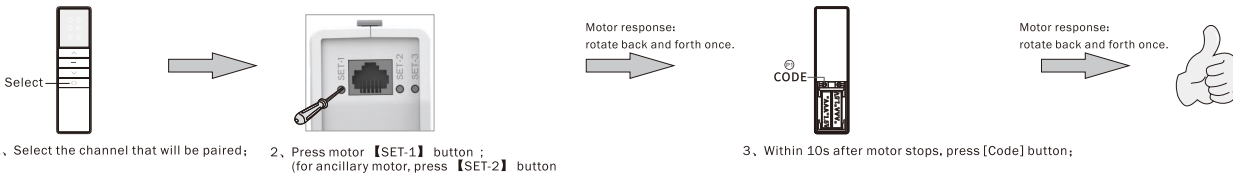
Units: (Kg) Remark: Double Single
Here by we recommend the formula to calculate the fabric weight as follows: fabric weight=fabric weight Kg/ m² x fabric area covered m² x wrinkles rate.

1.2N.m single motor	Track style		Loading weight							
	Fabric length									
	4m		60	50	R500	R500	R500	R500	R3000	R3000
	8m		55	45	40	35	30	25	21	16
	12m		50	40	35	30	25	20	—	—

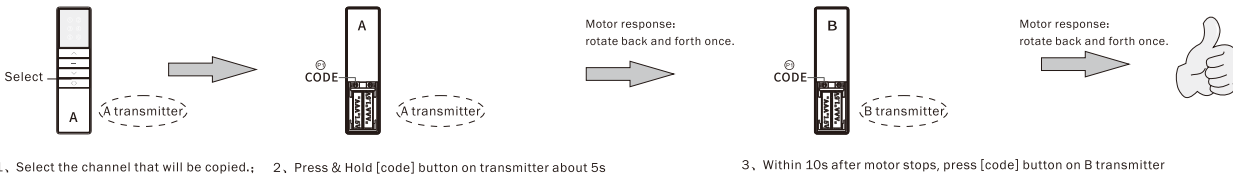
Description: 1. The chart shows the maximum load bearing of 1.2N. m single motor with different track settings (length/opening way, etc.).
When calculating the maximum load bearing, the fabric wrinkle rate should also be taken into account.
2. In the chart, the maximum load bearing does not consider the friction between fabric and track or curtain box.

Instructions: (Take A13 button transmitter as an example, for other transmitters, please refer to the corresponding transmitter manual.)

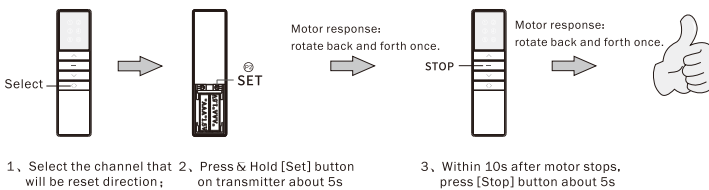
Pairing transmitter and motor repeat the pairing operation once to eliminate the current pairing. A motor stores up to 5 transmitter channels, adding a new transmitter channel will cover the earliest channel. For example, current paired channels are 1-5. If you add channel 6, paired channels will be 2-6.



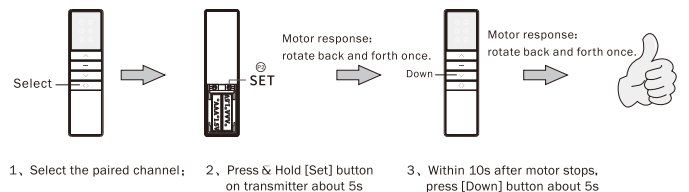
copy add a new channel to control motor. (No need to touch motor)



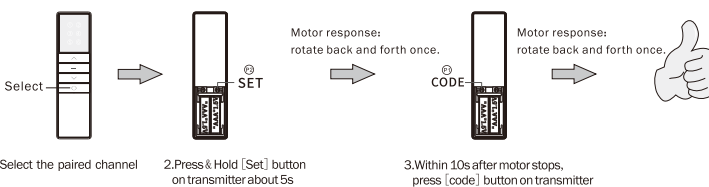
Reset direction Reset motor direction. Such as: before reset, press transmitter up button, blinds runs down. After reset, press transmitter up button, blinds runs up.



Fabric rebound location exchange setting



Cancel limit



Restore factory settings

clear all settings on the motor and restore to the default state

