

N21开合帘电机说明书-NMS WIFI

公司保留更改产品设计与说明书的权利，届时将不另行通知，图片仅供参考，具体以实物为准。

A/0 H12224

操作说明 (*以A13按键发射器为例进行说明，其它发射器请参考相应的发射器说明书。)

对码： 重复操作对码步骤即是消除当前码。一台电机最多储存5个发射通道，再新增发射器会循环覆盖最前一个通道。



1. 选择需要对码的频道;
2. 按一下电机上【SET-1】键;
3. 电机停止后10s内按一下【对码】键;

复制： 为已经对码的电机新增一个发射器:



1. 选择需要复制的频道;
2. 长按发射器【对码】键约5s
3. 电机停止后10s之内按B发射器【对码】键

换向： 切换已对上码电机运转方向。如：换向前，按发射器打开键，窗帘关闭，则需要换向设置:



1. 选择需要换向的频道;
2. 长按发射器【设置】键约5s
3. 电机停止后10s内按【停止键】约5s

行程取消：



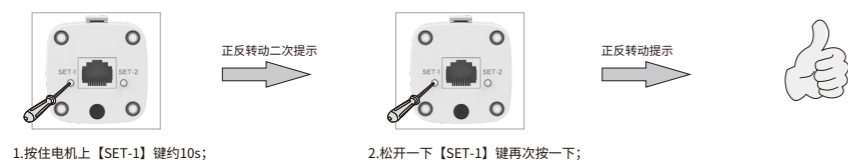
1. 选择需要取消的频道;
2. 长按发射器【设置】键约5s
3. 电机停止后10s内按下发射器【对码】键

面料反弹方向和启用面料反弹设定:



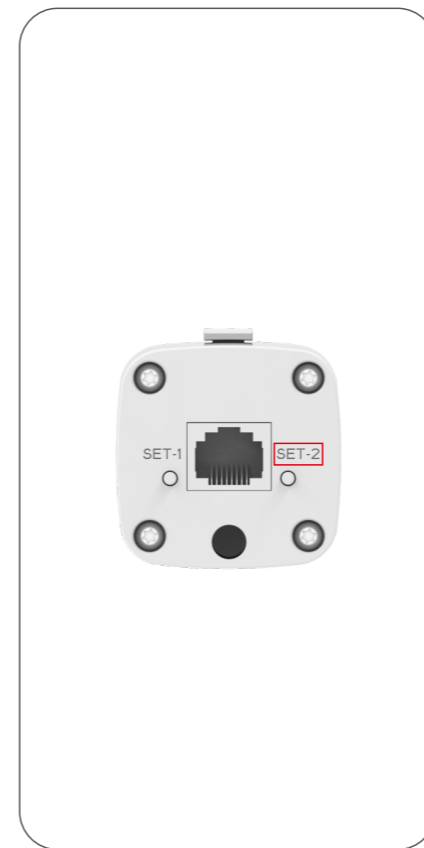
1. 选择相应的频道;
2. 长按发射器【设置】键约5s
3. 电机停止后10s内按【下】键约5s

恢复出厂设置： 清除电机上所有设置并恢复至默认状态（包括清除行程、清除所有对码）

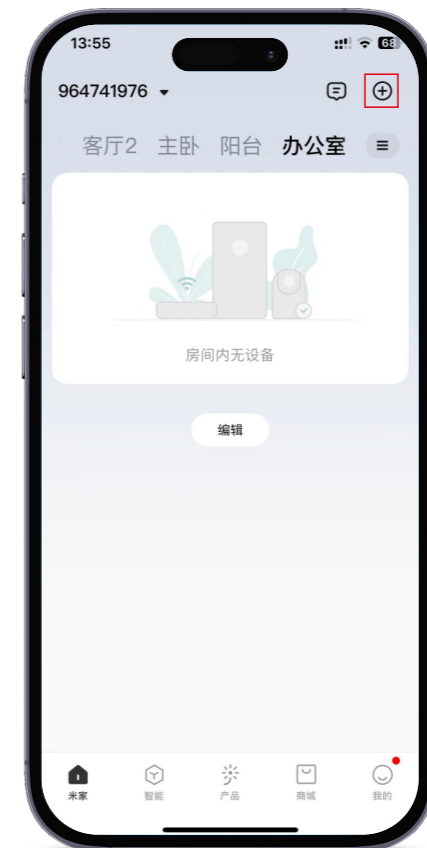


1. 按住电机上【SET-1】键约10s;
2. 松开一下【SET-1】键再次按一下;

APP配网方法:



01. 电机通电后长按【SET-2】键5秒，指示灯闪烁松开，进入配网状态。
温馨提示:若指示灯已在快闪，请跳过此步骤。



02. 打开米家APP，选择右上角的“+”



03. 选择“添加设备”



04. 选择“Ai智能窗帘电机”



05. 输入WiFi密码



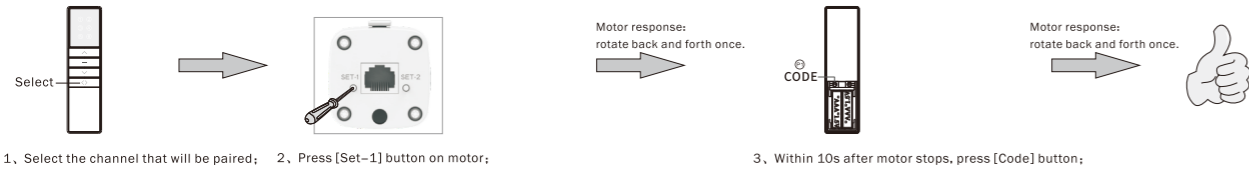
06. 最终操作界面如上图所示

N21 curtain motor manual NMS wifi

Company reserves the right to change product design and specifications without prior notice then ,photos are for reference only. A/0 H12224

Instructions: (Take A13 button transmitter as an example, for other transmitters, please refer to the corresponding transmitter manual.)

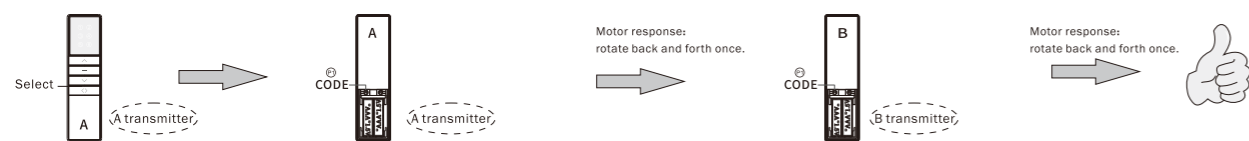
Pairing transmitter and motor repeat the pairing operation once to eliminate the current pairing. A motor stores up to 5 transmitter channels, adding a new transmitter channel will cover the earliest channel. For example, current paired channels are 1-5. If you add channel 6, paired channels will be 2-6.



1, Select the channel that will be paired; 2, Press [Set-1] button on motor;

3, Within 10s after motor stops, press [Code] button;

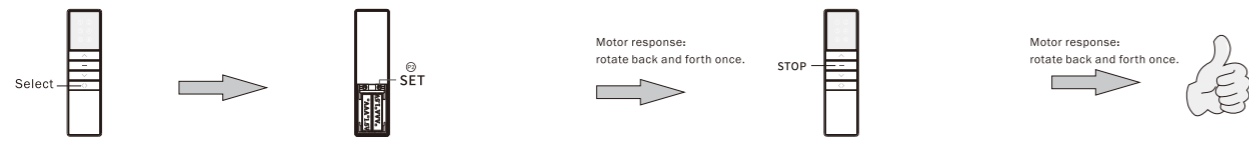
copy add a new channel to control motor. (No need to touch motor)



1, Select the channel that will be copied.; 2, Press & Hold [code] button on transmitter about 5s

3, Within 10s after motor stops, press [code] button on B transmitter

Reset direction Reset motor direction. Such as: before reset, press transmitter up button, blinds runs down. After reset, press transmitter up button, blinds runs up.

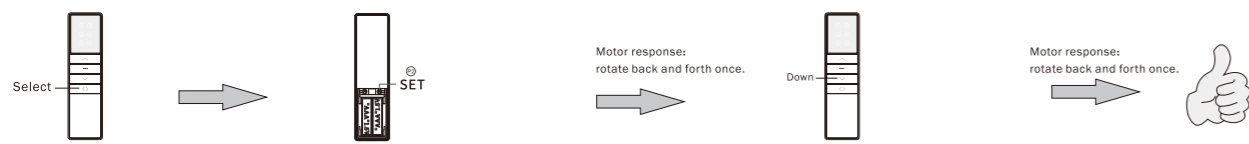


1, Select the channel that will be reset direction;

2, Press & Hold [Set] button on transmitter about 5s

3, Within 10s after motor stops, press [Stop] button about 5s

Fabric rebound location exchange setting

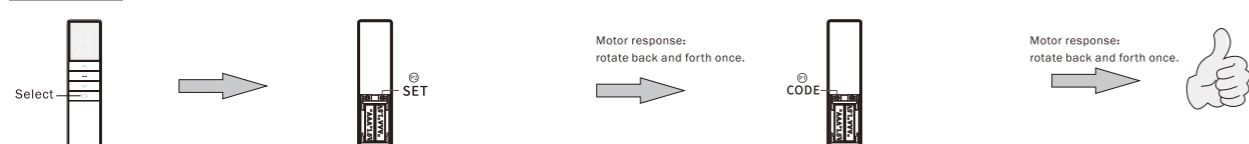


1, Select the paired channel;

2, Press & Hold [Set] button on transmitter about 5s

3, Within 10s after motor stops, press [Down] button about 5s

Cancel limit

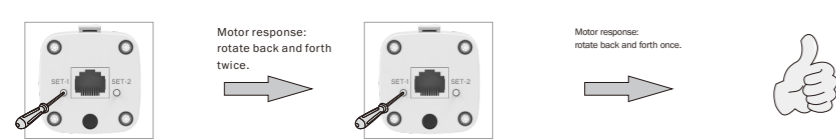


1.Select the paired channel

2.Press & Hold [Set] button on transmitter about 5s

3.Within 10s after motor stops, press [code] button on transmitter

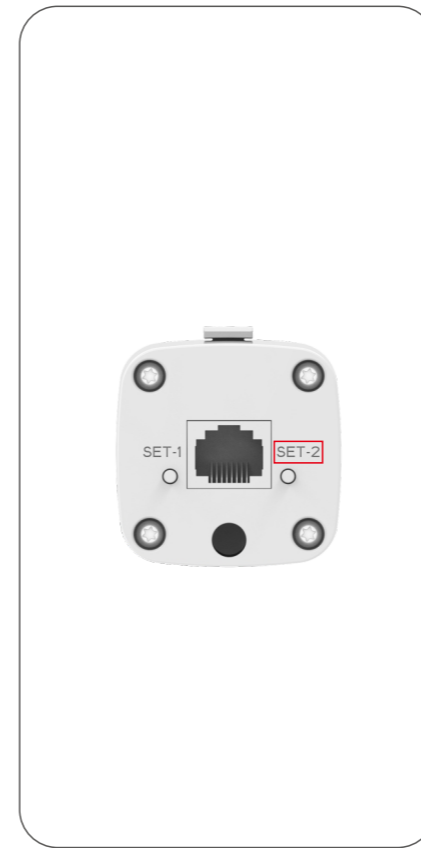
Restore factory settings clear all settings on the motor and restore to the default state



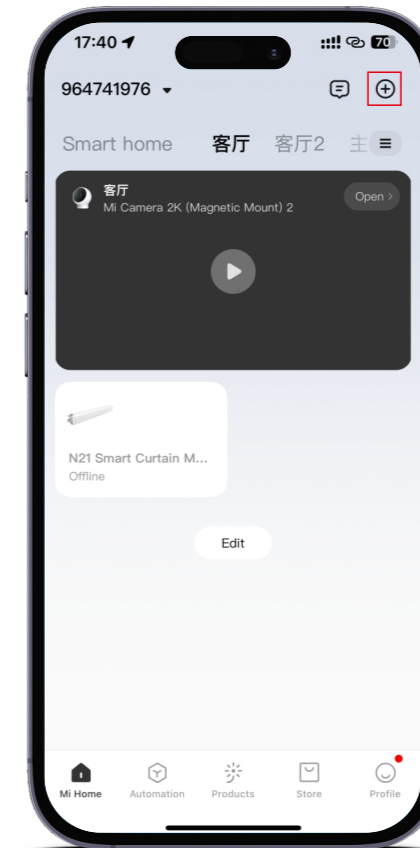
1.Press & Hold [Set-1] button on motor about 10s;

2.Release and press [Set-1] again.

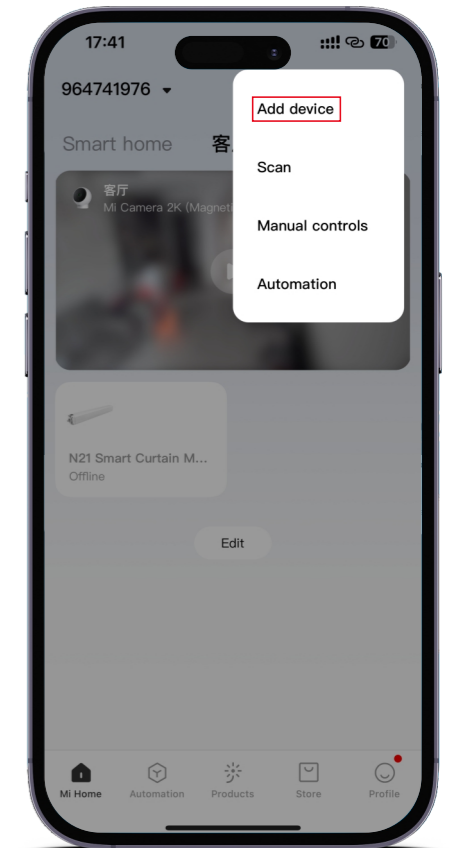
Configure network method:



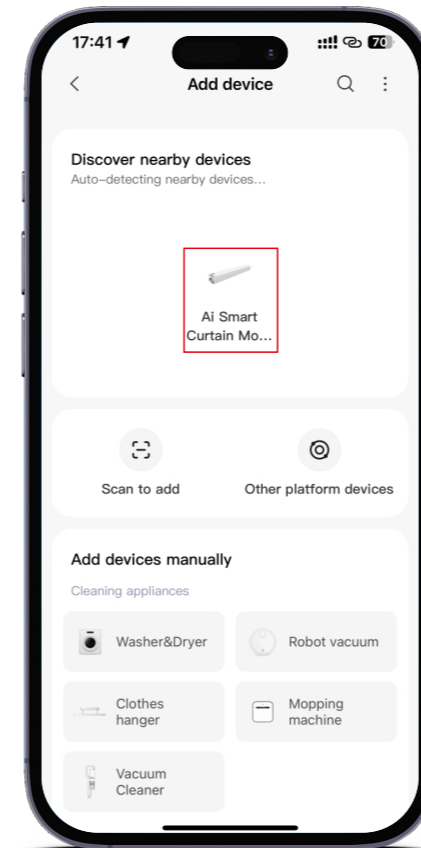
01.Press and hold the Reset button(SET-2)for 5 seconds until the indicator blinks
Reminder: If the indicator light is flashing fast, please skip this step.



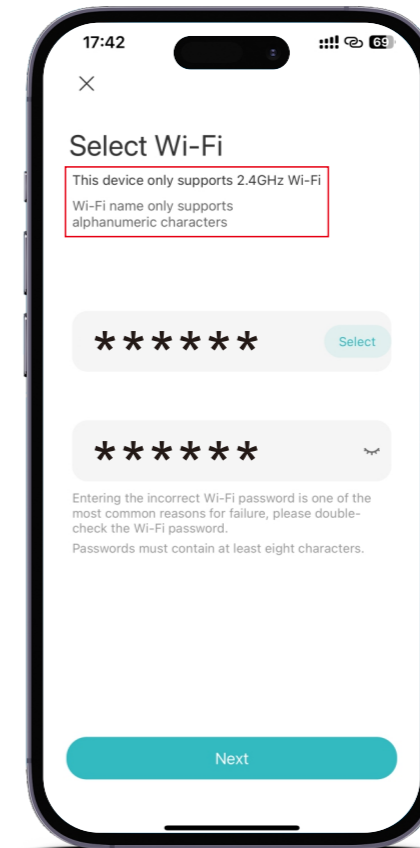
02.Open Mijia App, click “+”



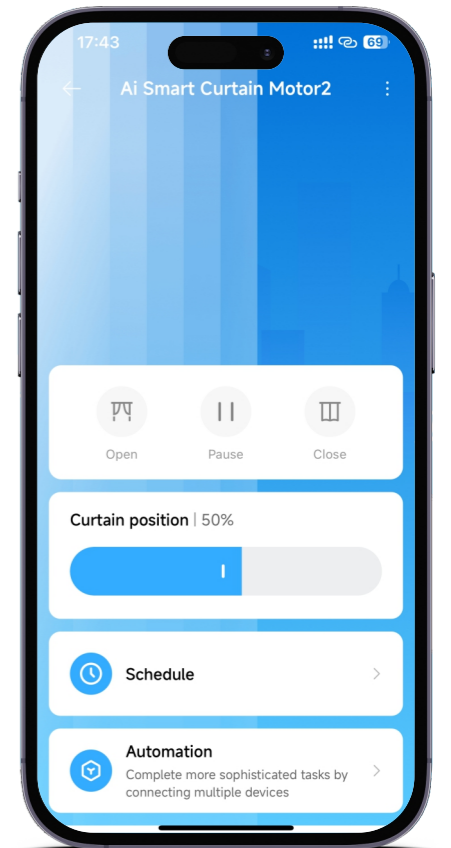
03.Click “Add Device”



04.Click “Ai Smart Curtain Motor”



05.Entering Wi-Fi password



06.Operation interface