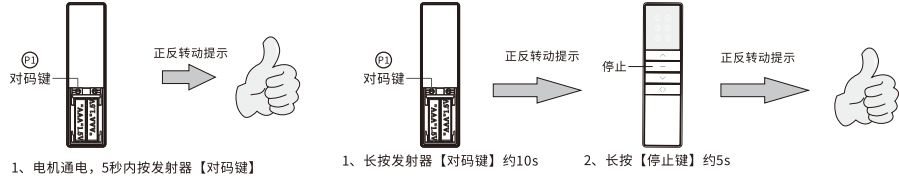


# K45-ELR管状电机X-说明书

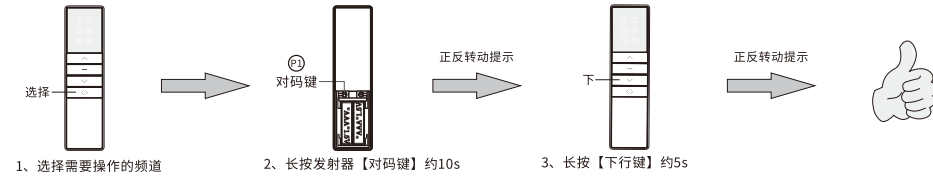
公司保留更改产品设计与说明书的权利,届时将不另行通知,图片仅供参考,具体以实物为准。A/1 H1217

**对码:** 电机通电自动进入对码,5秒后超时,电机无任何提示。

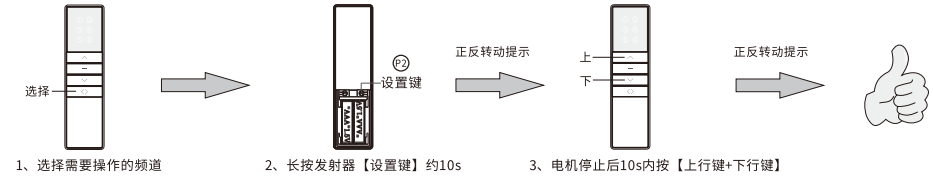
**消码:** 清除电机上所有接收存储发射器的记忆,其它设置不会改变或清除。



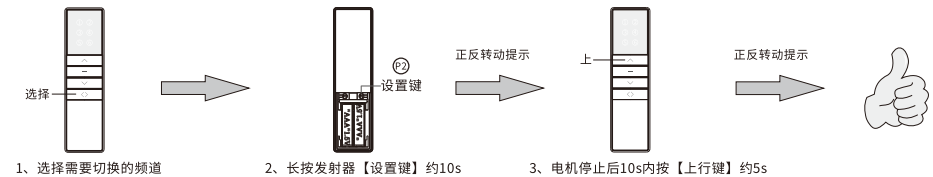
**遇阻功能:** 默认开启,重复操作是打开和关闭相互切换。



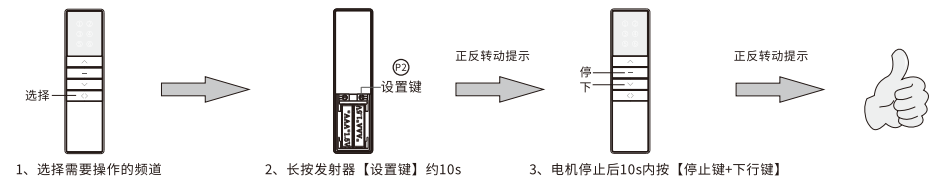
**遇阻反弹/遇阻停止互换:** 默认开启遇阻反弹模式,重复操作是遇阻反弹与遇阻停止相互切换。(默认反弹约30cm,切换后遇阻停止不反弹)



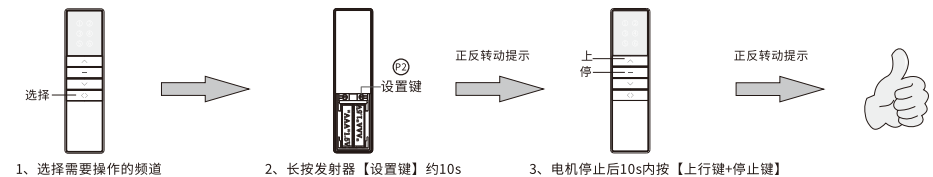
**点动/连动模式互换:** 电机出厂默认为连动模式,切换为点动模式后,长按住【上行键】或【下行键】约2s电机一直连动运转。



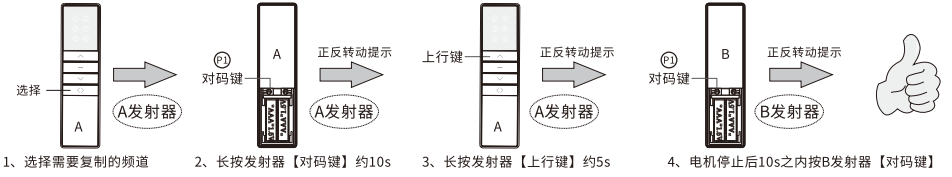
**轻抬上升/下降:** 电机出厂默认关闭,开启后,窗帘在离上限位10厘米之内轻抬,电机下降;否则在其他位置轻抬,电机上升。



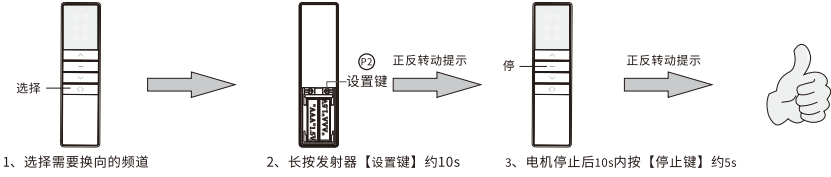
**面料修复:** 电机出厂默认关闭,开启后,当电机正常下降并停止时,电机反向上升一点距离,修复面料褶皱。



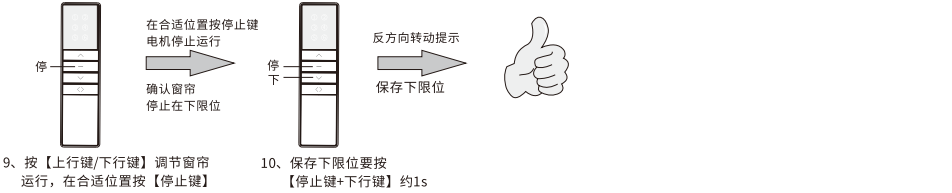
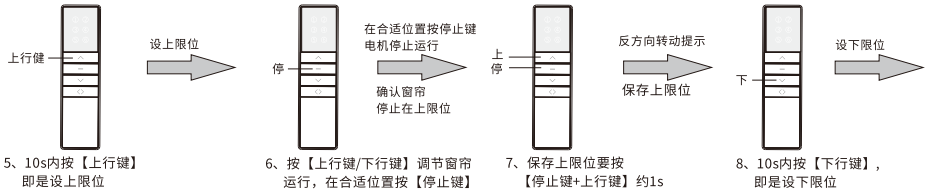
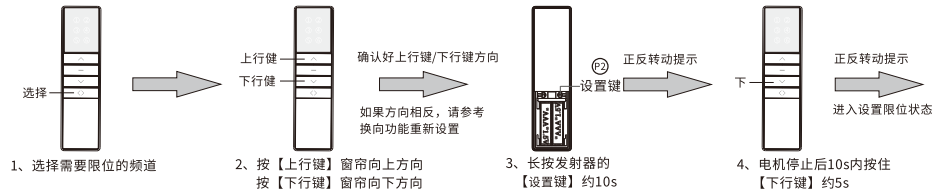
**复制:** 为已经对码的电机新增一个B发射器。



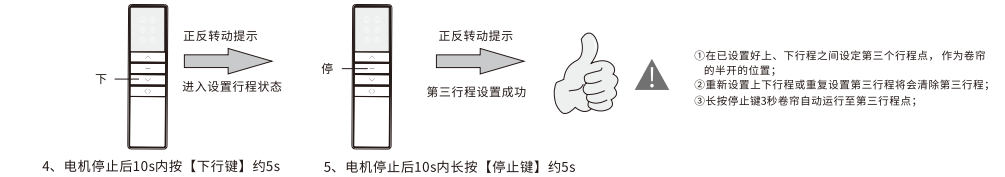
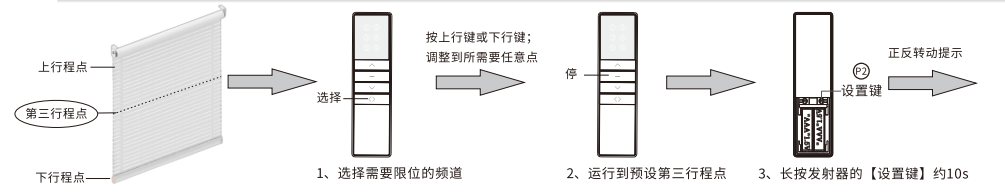
**换向:** 切换已对上码电机运转方向。如:换向前,按发射器上行键,窗帘往下运行;换向后,按发射器上行键,窗帘往上运行。



**上限位/下限位设置:** 指按发射器【上行键或下行键】时,窗帘向上/向下运行,所能到达的理想最高/最低位置。



**第三行程设置:** 窗帘运行到第三行程,重复操作可删除第三行程。



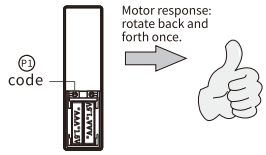
①在已设置好上、下行程之间设定第三个行程点,作为卷帘的半开的位置;  
②重新设置上下行程或重置设置第三行程将会清除第三行程;  
③长按停止键3秒卷帘自动运行至第三行程点;

# K45-ELR Tubular Motor Operating Manual

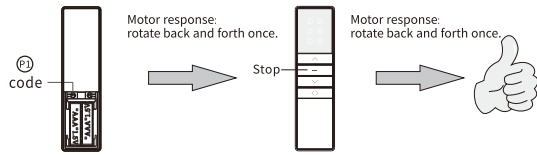
Company reserves the right to change product design and specifications without prior notice then, photos are for reference only. H12217 A/1

**Pairing method:** Motor enters pairing mode when powered on, and exits after 5s (no any prompts).

**Clear pairing :** Clear all pairing on the motor:

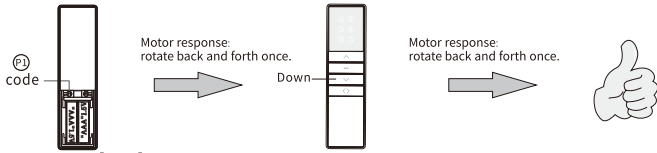


Power on motor, press transmitter [Code] within 5s



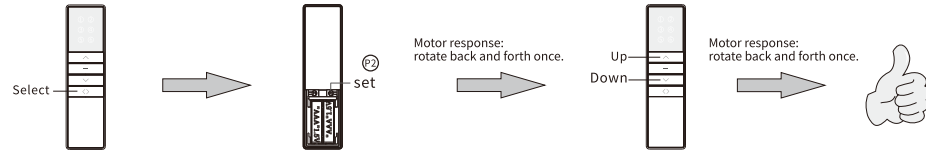
1. Press & Hold [Code] button on transmitter about 10s  
2. press [Stop] button about 5s;

**Resistance function:** enabled by default. Repeated operation is to open or close this function.



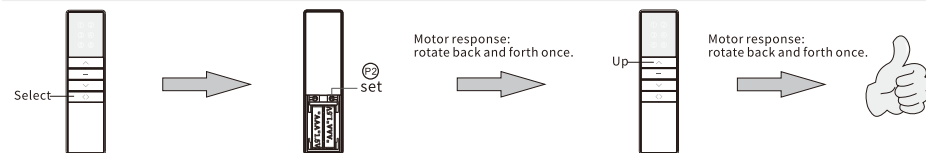
1. Press & Hold [Code] button on transmitter about 10s  
2. press [Down] button about 5s;

**Rebound or stop, when encountering resistance:** The rebound function is turned on by default, and repeated operation is to switch between rebound or stop function when encountering resistance. (Default rebound about 30cm)



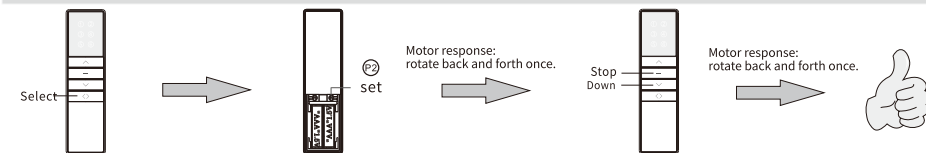
1. Select a channel that is already be paired  
2. Press & Hold [Set] button on transmitter about 10s;  
3. Within 10s after motor stops, press [Up+Down] button together;

**Inching / Continuous moving interchange:** Default is continuous moving. After switching to inching moving, press & hold [Up] or [Down] button about 2s, motor will continuously moves:



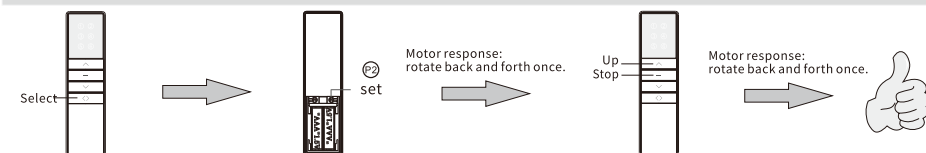
1. Select the channel that will be interchanged;  
2. Press & Hold [Set] button on transmitter about 10s;  
3. Within 10s after motor stops, press [Up] button about 5s;

**Lightly lift to up or down:** off by default. After turned on, when blinds are 10cm within top limit, lift the blinds to down. when blinds are out of 10cm, lift the blinds to up.



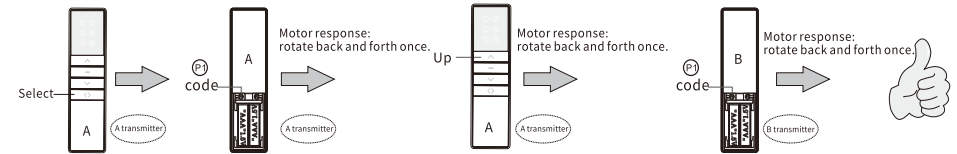
1. Select a channel that is already be paired  
2. Press & Hold [Set] button on transmitter about 10s;  
3. Within 10s after motor stops, press [Stop+Down] button together;

**Fabric finishing:** off by default. After turned on, when blinds down normally and stop, the blinds will rises a little to make fabric neat, not plicated.



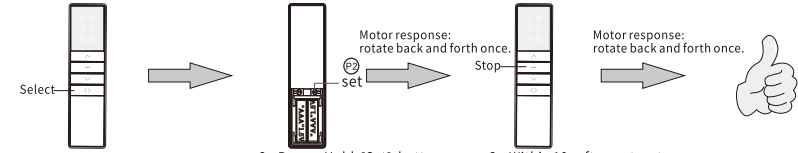
1. Select a channel that is already be paired  
2. Press & Hold [Set] button on transmitter about 10s;  
3. Within 10s after motor stops, press [Up+Stop] button together;

**Copy:** Add a new channel to control motor. (No need to touch motor):



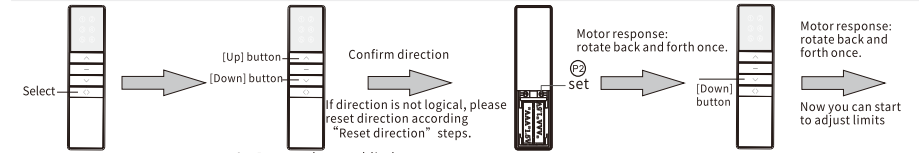
1. Select a channel that is already be paired  
2. Press & Hold [Code] button on transmitter about 10s  
3. Press & Hold [Up] button on transmitter about 5s  
4. Within 10s after motor stops, pair on the new channel;

**Reset direction :** Reset motor direction. Such as: before reset, press transmitter up button, blinds run up. After reset, press transmitter up button, blinds run up.

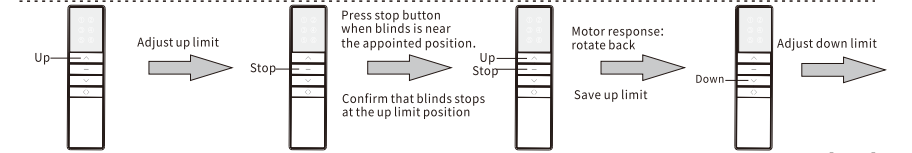


1. Select a channel that is already be paired  
2. Press & Hold [Set] button on transmitter about 10s;  
3. Within 10s after motor stops, press [Stop] button about 5s;

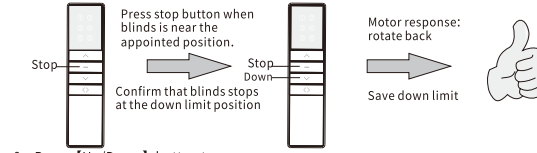
**Adjusting Limits:** When you press [Up] or [Down] button, the blinds will move up or down and stop automatically at the appointed position.



1. Select a channel that is already be paired  
2. Press up button, blinds up. Press down button, blinds down;  
3. Press & Hold [Set] button on transmitter about 10s;  
4. Within 10s after motor stops, press [Down] button about 5s;

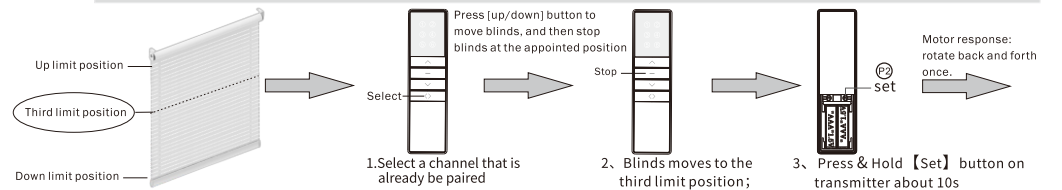


5. Within 10s press [Up] button to adjust up limit;  
6. Press [Up/Down] button to move blinds, and then stop blinds at the appointed position;  
7. Press & hold [Stop+Up] button about 1s to save up limit;  
8. Within 10s press [Down] button to adjust down limit;

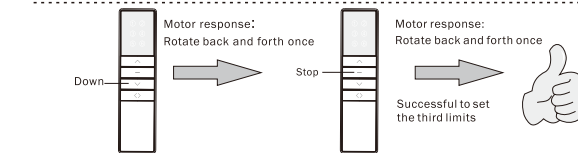


9. Press [Up/Down] button to move blinds, and then stop blinds at the appointed position;  
10. Press & hold [Stop+Down] button about 1s to save down limit;

**Adjust the third limit :** Repeat the operation once to eliminate the third limit:



1. Select a channel that is already be paired  
2. Blinds moves to the third limit position;  
3. Press & Hold [Set] button on transmitter about 10s



4. Within 10s after motor stops, press [Down] button about 5s;  
5. Within 10s after motor stops, press [Stop] button about 5s;

- ① Set the third position between up limit and down limit.
- ② Reset up limit or down limit, or repeat third position setting steps will delete the third position
- ③ Press & Hold [stop] button about 3s, blinds will move to the third position.